

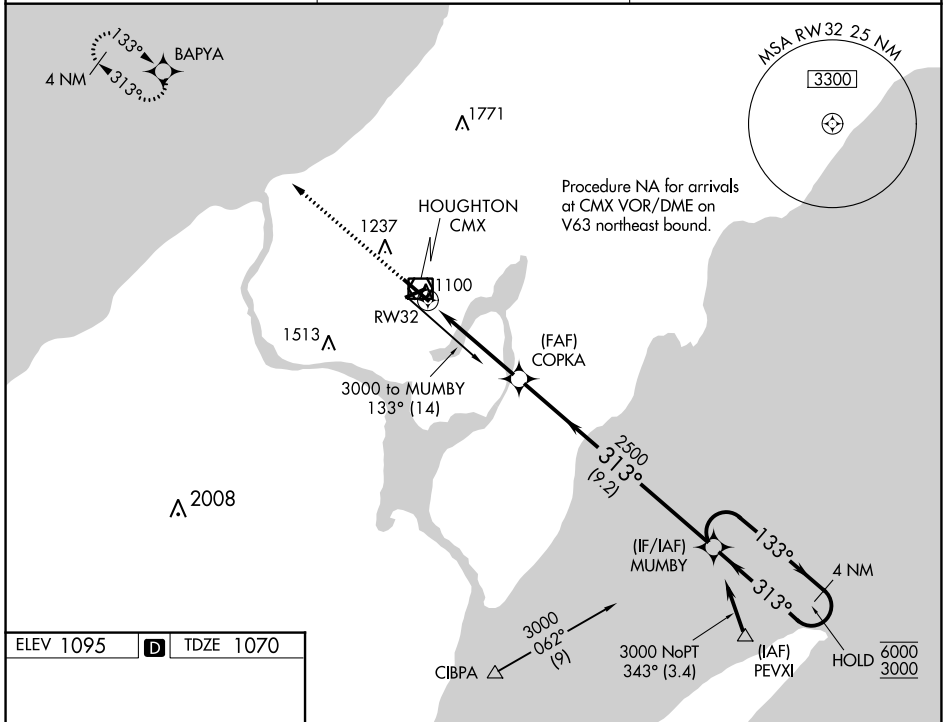
WAAS CH <b>45809</b> <b>W32A</b>	APP CRS <b>313°</b>	Rwy Idg <b>6501</b> TDZE <b>1070</b> Apt Elev <b>1095</b>
--	------------------------	---

# RNAV (GPS) RWY 32

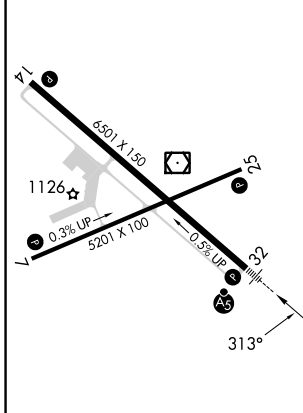
HOUGHTON COUNTY MEML (CMX)

RNP APCH - GPS.	MALSR	MISSED APPROACH: Climb to 3700 direct BAPYA and hold.
<p>▼ For uncompensated Baro-VNAV systems, LNAV/VNAV NA below -17°C or above 54°C. For inop ALS, increase LNAV/VNAV all Cats visibility to 7/8 SM, increase LNAV Cats C/D visibility to 1 SM.</p>		

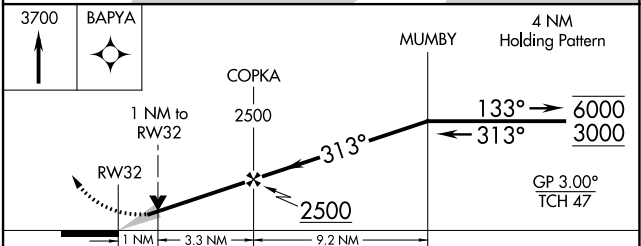
ASOS <b>125.675</b>	MINNEAPOLIS CENTER <b>133.55 379.1</b>	UNICOM <b>122.7 (CTAF)</b>
------------------------	---	-------------------------------



ELEV 1095	<b>D</b>	TDZE 1070
-----------	----------	-----------



HIRL Rwy 14-32 **1**  
MIRL Rwy 7-25 **1**  
REIL Rwy 7, 14 and 25 **1**



CATEGORY	A	B	C	D
LPV DA		1320-1/2	250 (300-1/2)	
LNAV/VNAV DA		1367-1/2	297 (300-1/2)	
LNAV MDA	1420-1/2	350 (400-1/2)	1420-5/8	350 (400-5/8)
<b>C</b> CIRCLING	1620-1 525 (600-1)	1660-1 565 (600-1)	1700-1 3/4 605 (700-1 3/4)	1820-2 1/4 725 (800-2 1/4)

EC-1, 26 DEC 2024 to 23 JAN 2025

EC-1, 26 DEC 2024 to 23 JAN 2025