

WAAS CH 65706 W06A	APP CRS 064°	Rwy Idg TDZE 569 Apt Elev 569	6802
--	------------------------	---	-------------

RNAV (GPS) RWY 6

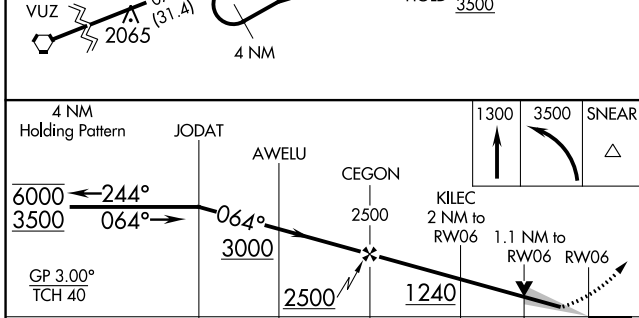
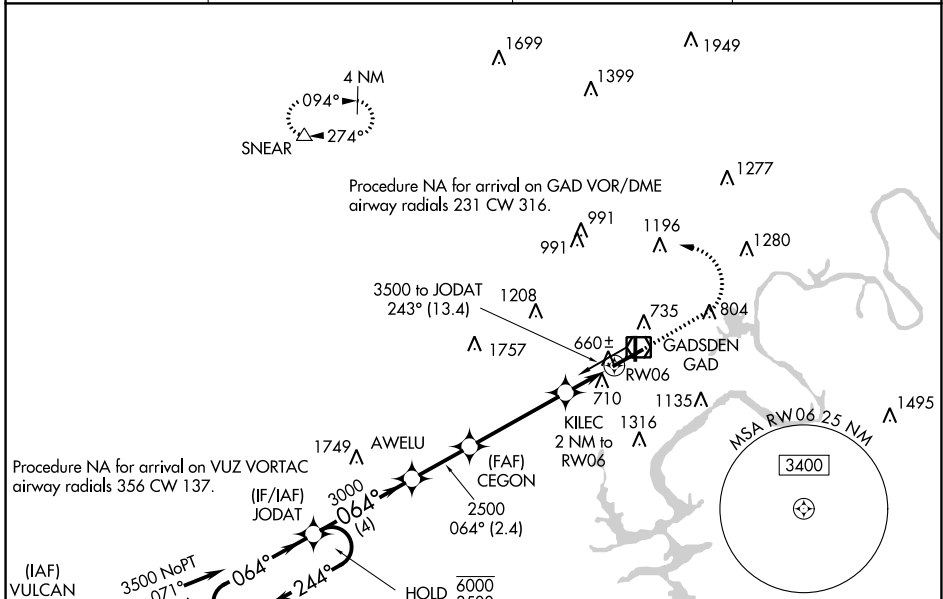
NORTHEAST ALABAMA RGNL (GAD)

RNP APCH-GPS.

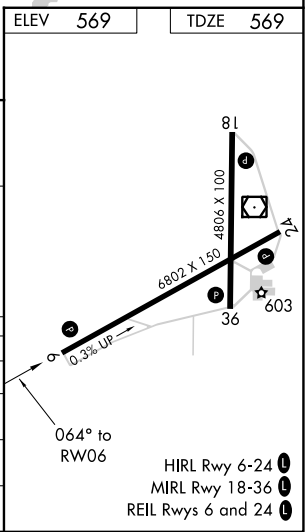
Baro-VNAV and VDP NA when using Anniston altimeter setting. For uncompensated Baro-VNAV systems, LNAV/VNAV NA below -16°C or above 54°C. When local altimeter not received, use Anniston altimeter setting and increase LPV DA to 835, LNAV/VNAV DA to 1040 and all MDA 80 feet; increase LPV all Cats visibility 1/8 SM, LNAV/VNAV all Cats 1/4 SM and increase LNAV Cats C/D and Circling Cat C visibility 1/4 SM.

MISSED APPROACH: Climb to 1300 then climbing left turn to 3500 direct SNEAR and hold.

AWOS-3PT 127.825	BIRMINGHAM APP CON 125.45 279.65	CLNC DEL 120.05 257.7	UNICOM 122.8 (CTAF)
----------------------------	--	---------------------------------	-------------------------------



CATEGORY	A	B	C	D
LPV DA		769-3/4	200 (200-3/4)	
LNAV/VNAV DA		960-1 1/8	391 (400-1 1/8)	
LNAV MDA	960-1	391 (400-1)	960-1 1/8	391 (400-1 1/8)
CIRCLING	1100-1	531 (600-1)	1440-2 1/2 871 (900-2 1/2)	1680-3 1111 (1200-3)



SE-4, 26 DEC 2024 to 23 JAN 2025

SE-4, 26 DEC 2024 to 23 JAN 2025