

VOR/DME GAD 112.3 Chan 70	APP CRS 052°	Rwy Idg TDZE Apt Elev	6802 569 569
---	------------------------	-----------------------------	---

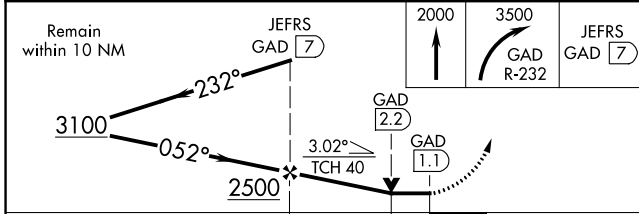
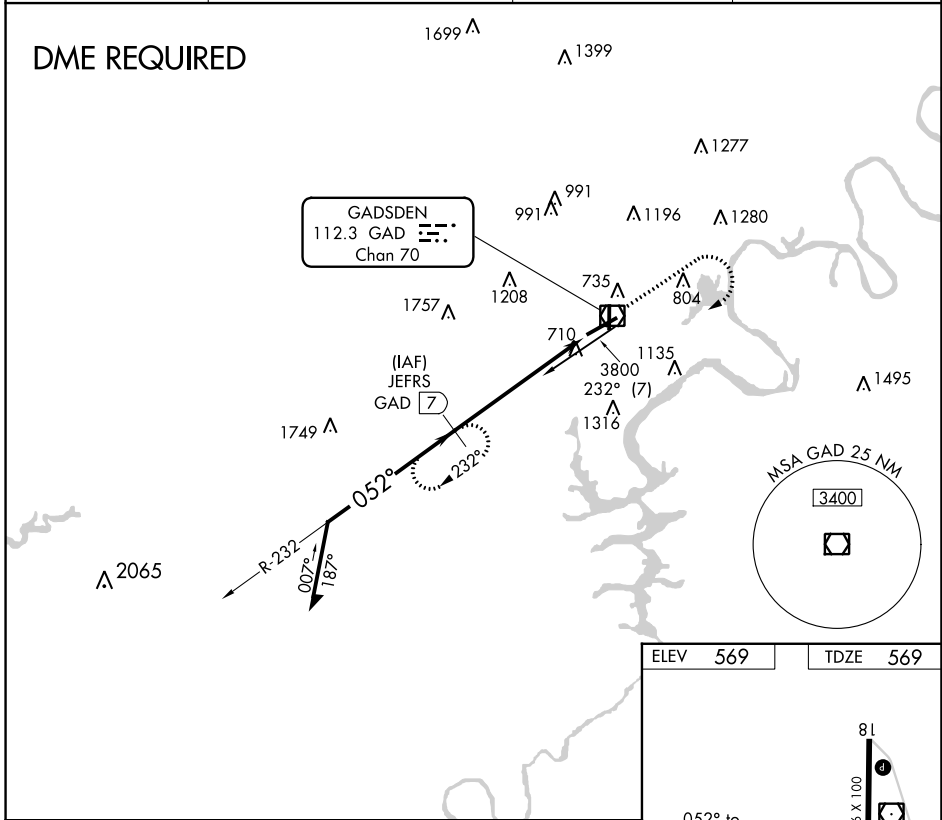
VOR RWY 6

NORTHEAST ALABAMA RGNL (GAD)

⚠ When local altimeter setting not received, use Anniston altimeter setting and increase all MDAs 80 feet; increase S-6 Cat C/D visibility ¼ mile and Circling Cat C ½ SM. VDP NA when using Anniston altimeter setting. DME required.

MISSED APPROACH: Climb to 2000 then climbing right turn to 3500 on GAD VOR/DME R-232 to JEFRS/7 DME and hold.

AWOS-3PT 127.825	BIRMINGHAM APP CON 125.45 279.65	CLNC DEL 120.05 257.7	UNICOM 122.8 (CTAF)
----------------------------	--	---------------------------------	-------------------------------



ELEV	569	TDZE	569
------	-----	------	-----

HIRL Rwy 6-24
MIRL Rwy 18-36
REIL Rws 6 and 24

FAF to MAP 5.9 NM					
Knots	60	90	120	150	180
Min:Sec	5:54	3:56	2:57	2:22	1:58

CATEGORY	A	B	C	D
S-6	960-1 391 (400-1)		960-1 ½ 391 (400-1 ½)	
C CIRCLING	1100-1 531 (600-1)		1440-2 ½ 871 (900-2 ½)	1680-3 1111 (1200-3)

SE-4, 26 DEC 2024 to 23 JAN 2025

SE-4, 26 DEC 2024 to 23 JAN 2025