

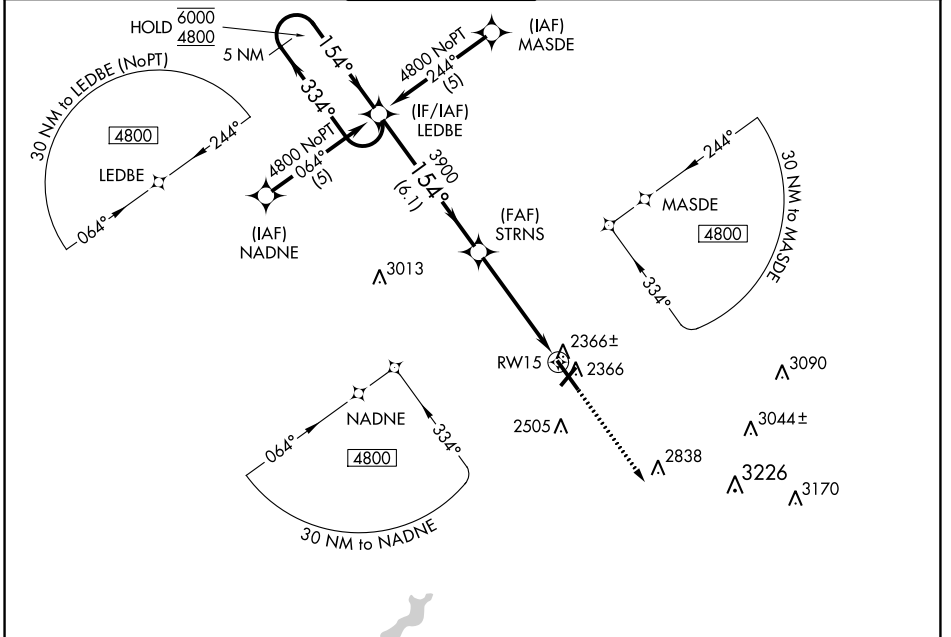
WAAS CH 53513 W15A	APP CRS 154°	Rwy Idg TDZE Apt Elev	6698 2276 2284
--	------------------------	-----------------------------	---

RNAV (GPS) RWY 15

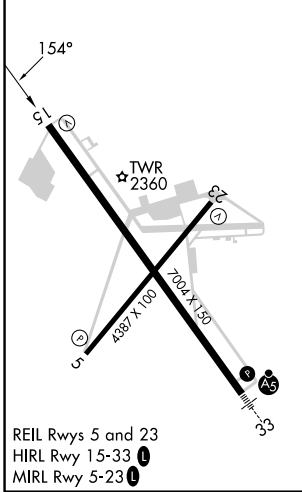
JOHN MURTHA JOHNSTOWN/CAMBRIA COUNTY (JST)

RNP APCH - GPS.		MISSED APPROACH: Climb to 4900 direct COTSO and hold.			
Baro-VNAV NA.					

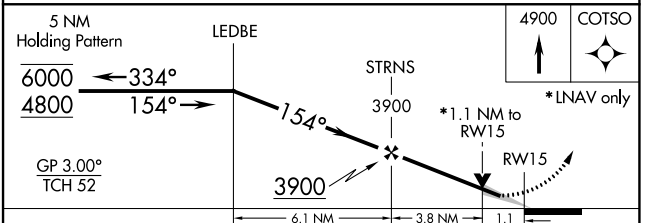
ATIS 118.325	JOHNSTOWN APP CON ★ 121.2 299.2	JOHNSTOWN TOWER ★ 125.75 (CTAF)	GND CON 121.6	CLNC DEL 126.85 235.775	UNICOM 122.95
------------------------	---	---	-------------------------	-----------------------------------	-------------------------



ELEV 2284	D	TDZE 2276
-----------	----------	-----------



REIL Rws 5 and 23
HIRL Rwy 15-33
MIRL Rwy 5-23



CATEGORY	A	B	C	D
LPV DA	2526- ³ / ₄			
LNNAV/ VNAV DA	2595-1			
LNNAV MDA	2680-1	404 (400-1)	2680-1 ¹ / ₈ 404 (400-1 ¹ / ₈)	2680-1 ¹ / ₄ 404 (400-1 ¹ / ₄)
CIRCLING	2700-1 416 (500-1)	2880-1 596 (600-1)	2880-1 ¹ / ₂ 596 (600-1 ¹ / ₂)	3000-2 ¹ / ₄ 716 (800-2 ¹ / ₄)

NE-4, 26 DEC 2024 to 23 JAN 2025

NE-4, 26 DEC 2024 to 23 JAN 2025