

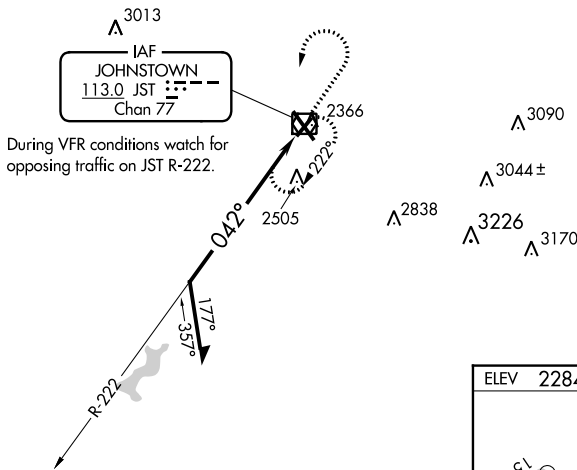
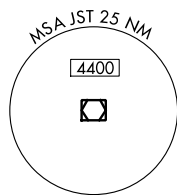
VOR/DME JST 113.0 Chan 77	APP CRS 042°	Rwy Idg TDZE Apt Elev 4387 2284 2284
---	------------------------	--

VOR RWY 5

JOHN MURTHA JOHNSTOWN/CAMBRIA COUNTY (JST)

<p>▼ Rwy 5 helicopter visibility reduction below $\frac{3}{4}$ SM NA.</p> <p>▲</p>	<p>MISSED APPROACH: Climb to 4200 then left turn direct JST VOR/DME and hold.</p>
---	---

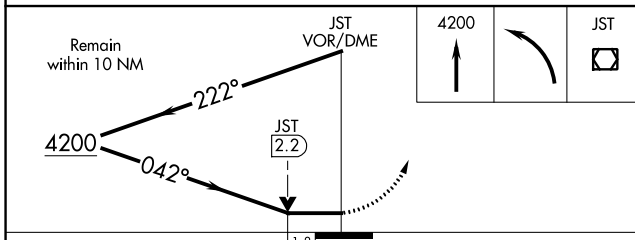
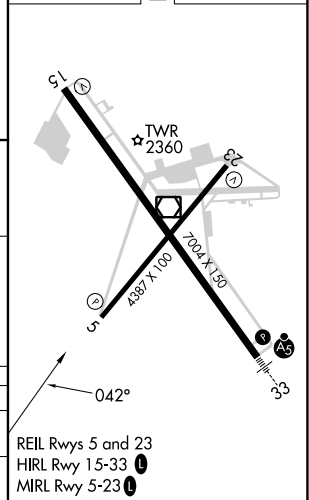
ATIS 118.325	JOHNSTOWN APP CON * 121.2 299.2	JOHNSTOWN TOWER * 125.75 (CTAF) 0	GND CON 121.6	CLNC DEL 126.85 235.775	UNICOM 122.95
------------------------	---	---	-------------------------	-----------------------------------	-------------------------



During VFR conditions watch for opposing traffic on JST R-222.

IAF
JOHNSTOWN
113.0 JST
Chan 77

ELEV 2284	D	TDZE 2284
-----------	----------	-----------



CATEGORY	A	B	C	D
S-5	2880-1 596 (600-1)		2880-1 $\frac{3}{4}$ 596 (600-1 $\frac{3}{4}$)	
C CIRCLING	2880-1 596 (600-1)		2880-1 $\frac{3}{4}$ 596 (600-1 $\frac{3}{4}$)	3000-2 $\frac{1}{4}$ 716 (800-2 $\frac{1}{4}$)

VOR RWY 5

NE-4, 26 DEC 2024 to 23 JAN 2025

NE-4, 26 DEC 2024 to 23 JAN 2025