

WAAS CH <b>40420</b> <b>W18A</b>	APP CRS <b>178°</b>	Rwy Idg TDZE <b>206</b> Apt Elev <b>206</b>	<b>5998</b>
--	------------------------	---	-------------

# RNAV (GPS) RWY 18

PINEBLUFF RGNL/GRIDER FLD (PBF)

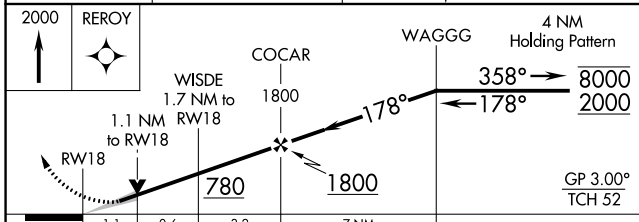
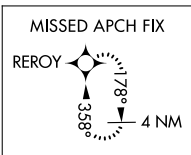
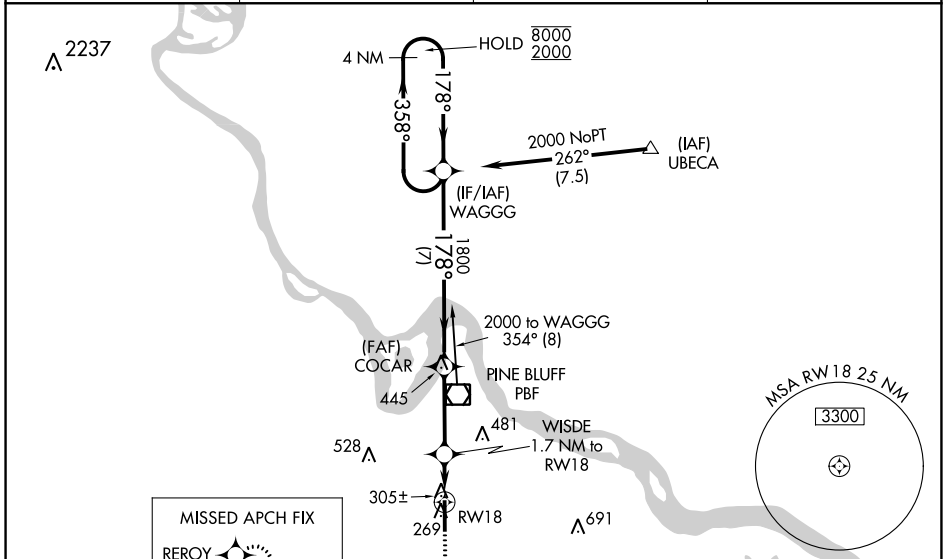
RNP APCH - GPS.

**⚠** Baro-VNAV and VDP NA when using Stuttgart altimeter setting. For uncompensated Baro-VNAV systems, LNAV/VNAV NA below -10°C or above 54°C. When local altimeter setting not received, use Stuttgart altimeter setting and increase LPV DA to 534 feet; increase LNAV/VNAV DA to 723 feet and all visibilities ½ SM. Increase all MDAs 80 feet and LNAV visibility Cat C/D ¾ SM, and Circling visibility Cat C/D ¼ SM. For inop ALS, increase LNAV Cats A/B visibility to 1 SM and Cats C/D visibility to 1½ SM. For inop ALS when using Stuttgart altimeter setting, increase LPV all Cats visibility to 1 SM; increase LNAV/VNAV all Cats visibility to 1½ SM; increase LNAV Cats C/D visibility 1½ SM.

MALS R

**⚠** MISSED APPROACH: Climb to 2000 direct REROY and hold.

ASOS <b>120.775</b>	LITTLE ROCK APP CON <b>119.85 353.6</b>	CINC DEL <b>119.85</b>	UNICOM <b>123.0 (CTAF) 0</b>
------------------------	--	---------------------------	---------------------------------



ELEV 206	TDZE 206
178°	
81	
36	
MIRL Rwy 18-36 0	

CATEGORY	A	B	C	D
LPV DA		459-¾	253 (300-¾)	
LNAV/VNAV DA		648-1	442 (500-1)	
LNAV MDA		600-¾	394 (400-¾)	
CIRCLING	660-1 454 (500-1)	680-1 474 (500-1)	840-1¾ 634 (700-1¾)	880-2¼ 674 (700-2¼)

SC-1, 26 DEC 2024 to 23 JAN 2025

SC-1, 26 DEC 2024 to 23 JAN 2025