

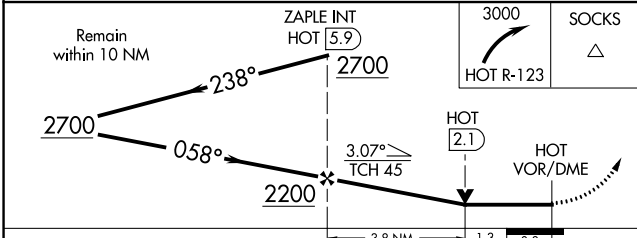
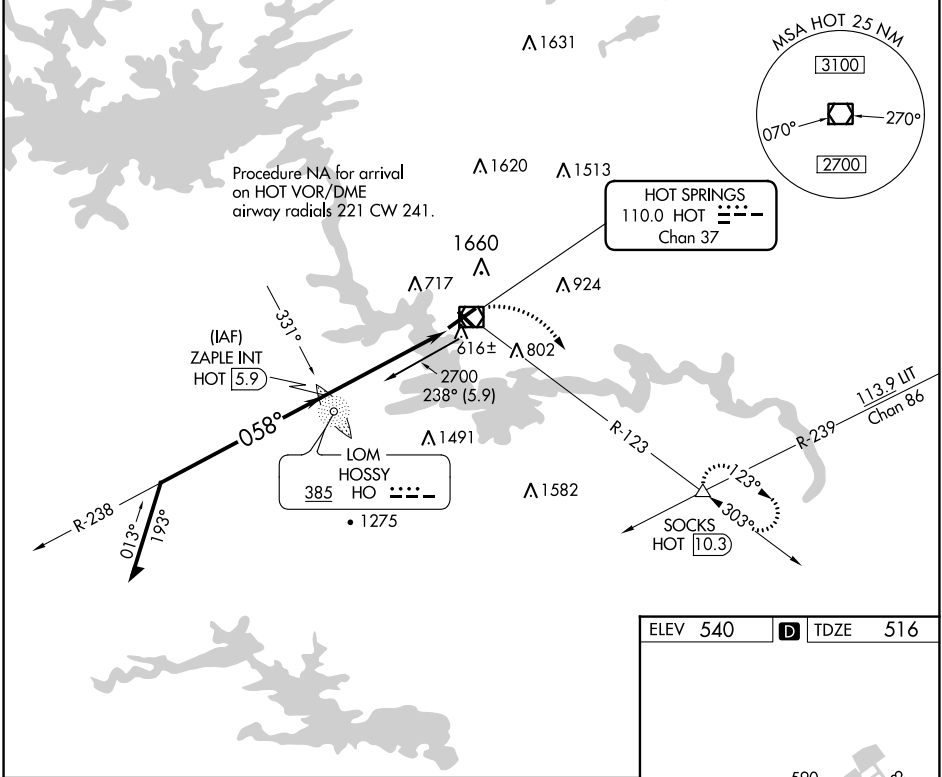
VOR/DME HOT 110.0 Chan 37	APP CRS 058°	Rwy Idg 6595 TDZE 516 Apt Elev 540
---	------------------------	---

VOR RWY 5

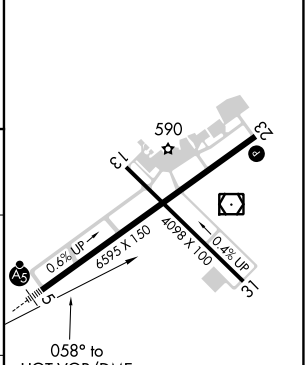
MEML FLD (HOT)

ADF or DME required for procedure entry. ADF or DME required.	MALSR 	MISSED APPROACH: Climbing right turn to 3000 on HOT R-123 to SOCKS INT/HOT 10.3 DME and hold.
Circling NA northwest of Rws 5 and 23. Circling Rwy 31 NA at night.		

ASOS 119.925	MEMPHIS CENTER 128.475 377.15	UNICOM 123.0 (CTAF) 0
------------------------	---	---------------------------------



ELEV 540	D TDZE 516
----------	-------------------



CATEGORY	A	B	C	D
S-5	960-1/2 444 (500-1/2)		960-7/8 444 (500-7/8)	
C CIRCLING	1080-1 540 (600-1)		1380-2 1/2 840 (900-2 1/2)	1620-3 1080 (1100-3)

HIRL Rwy 5-23 0

MIRL Rwy 13-31 0

REIL Rwy 13 0

SC-1, 26 DEC 2024 to 23 JAN 2025

SC-1, 26 DEC 2024 to 23 JAN 2025