

SAN DIEGO, CALIFORNIA

ILS Y or LOC/DME Y RWY 24R

LOC/DME I-NKX
111.15
Chan **48 (Y)**

APCH CRS
243°

Rwy Ldg	8001	24R
TDZE	477	475
Arpt Elev	477	477

AL-903 [USN]

MIRAMAR MCAS (JOE FOSS FLD) (KNKX)

TACAN or RADAR required.

▼ * When ALS inop, increase vis to ¾ mile.
 ** When ALS inop, increase CAT AB vis to 1 mile,
 CAT CDE vis to 1½ miles.
 *** CAT E circling not authorized S of Rwy 6R-24L.



MISSED APPROACH: Climb to 1500, then climbing right turn to 3000 via heading 340°. Expect radar vectors.

ATIS ★
133.475
352.0

SOCAL APP CON
132.2
269.1

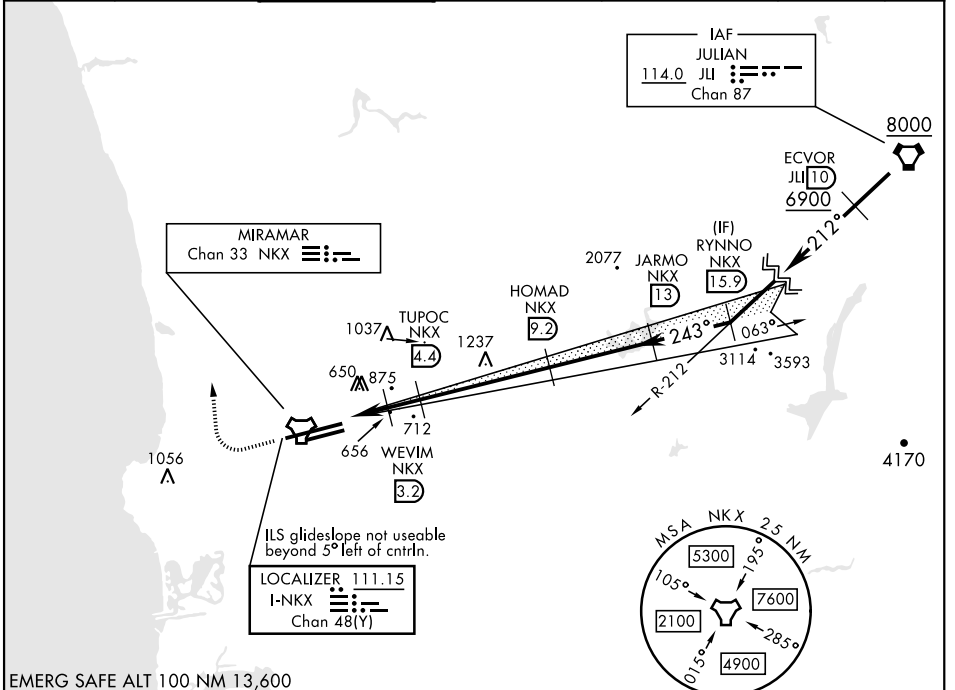
FOSS TOWER ★
135.2
298.925

GND CON
128.625
307.325

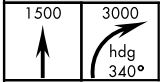
CLNC DEL
125.975
254.325

LA CENTER
291.7

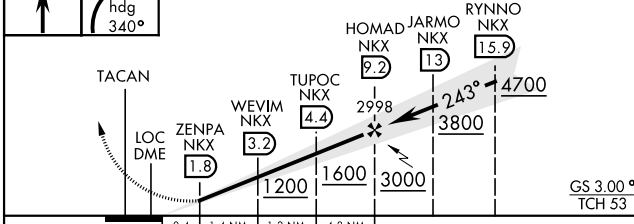
ASR/
PAR



EMERG SAFE ALT 100 NM 13,600



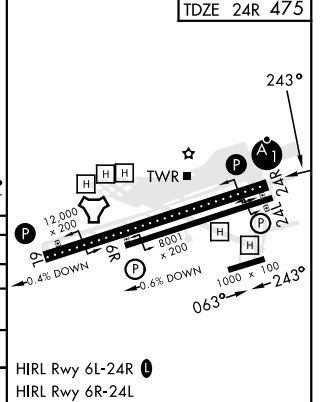
VGSIs and descent angles not coincident.



ELEV 477

TDZE 24L 477
TDZE 24R 475

CATEGORY	DISTANCE FROM RWY				
	A	B	C	D	E
S-ILS 24R*	675 - ½ 200 (200-½)				
S-LOC/DME 24R**	920-½	445 (500-½)	920-¾	445 (500-¾)	
SIDESTEP 24L	920-1	443 (500-1)	920-1½ 443 (500-1½)	920-2 443 (500-2)	1360-3
CIRCLING***	940-1 463 (500-1)	960-1 483 (500-1)	960-1½ 483 (500-1½)	1180-2¼ 703 (800-2¼)	1360-3 883 (900-3)



SAN DIEGO, CALIFORNIA
Orig 14JUL22

32°52'N-117°09'W

MIRAMAR MCAS (JOE FOSS FLD) (KNKX)

ILS Y or LOC/DME Y RWY 24R

SW-3, 26 DEC 2024 to 23 JAN 2025