

SAN DIEGO, CALIFORNIA

RNAV (GPS) RWY 24R

WAAS CH 61450 W24B	APCH CRS 243°	Rwy Idg 12,000 TDZE 475 Arpt Elev 477
--------------------------	------------------	---

AL-903 [UN]

MIRAMAR MCAS (JOE FOSS FLD) (KNKX)

RNP APCH

- When ALS inop, increase vis to 3/4 mile.
- When ALS inop, increase vis to 3/4 mile.
- When ALS inop, increase CAT AB vis to 1 mile, CAT CD vis to 1 3/4 miles.

ALSF-1

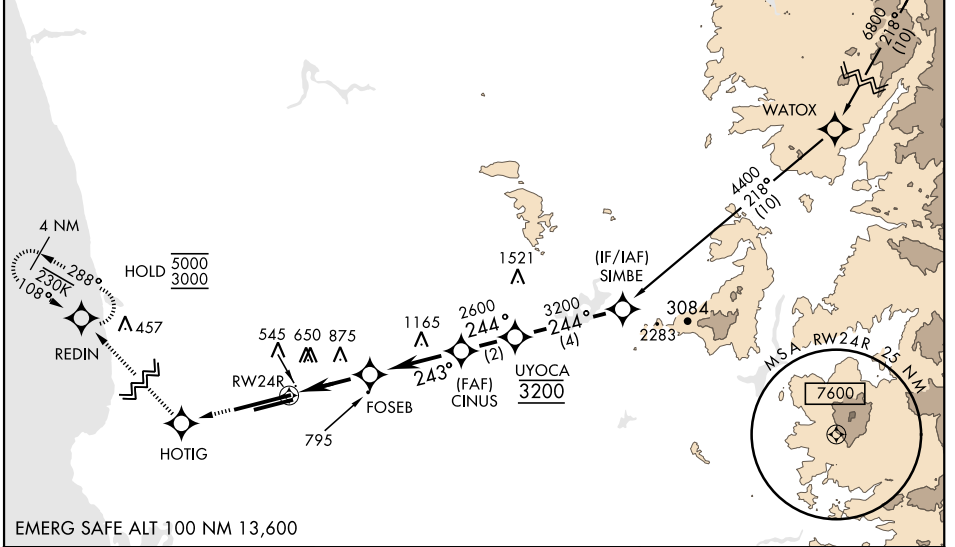


MISSED APPROACH: Climb to 3000 direct HOTIG, 288° track to REDIN and hold.

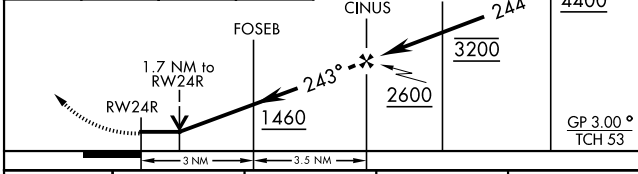
ATIS ★ 352.0 133.475	SOCAL APP CON 132.2 269.1	FOSS TOWER ★ 135.2 298.925	GND CON 128.625 307.325	CLNC DEL 125.975 254.325	LA CENTER 291.7	ASR/ PAR
----------------------------	---------------------------------	----------------------------------	-------------------------------	--------------------------------	--------------------	-------------

For uncompensated Baro-VNAV systems, procedure NA below -15°C (5°F) or above 54°C (130°F).

CAUTION: Intermediate deceleration segment descent gradient 309 FPM is greater than 150 FPM.

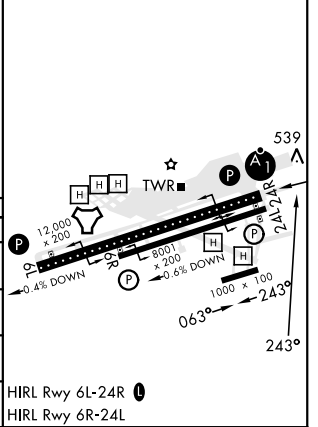


EMERG SAFE ALT 100 NM 13,600



ELEV 477	TDZE 475
----------	----------

CATEGORY	A	B	C	D
LPV DA *	675-1/2	200	(200-1/2)	
LNAV/VNAV DA **	725-1/2	250	(300-1/2)	
LNAV MDA ***	1060-1/2	585 (600-1/2)	1060-1 1/4	585 (600-1 1/4)
CIRCLING	1060-1	583 (600-1)	1060-1 3/4	1180-2 1/4



SAN DIEGO, CALIFORNIA

32°52'N-117°09'W

MIRAMAR MCAS (JOE FOSS FLD) (KNKX)

Amdt 4 27JAN22

RNAV (GPS) RWY 24R

SW-3, 26 DEC 2024 to 23 JAN 2025

SW-3, 26 DEC 2024 to 23 JAN 2025