

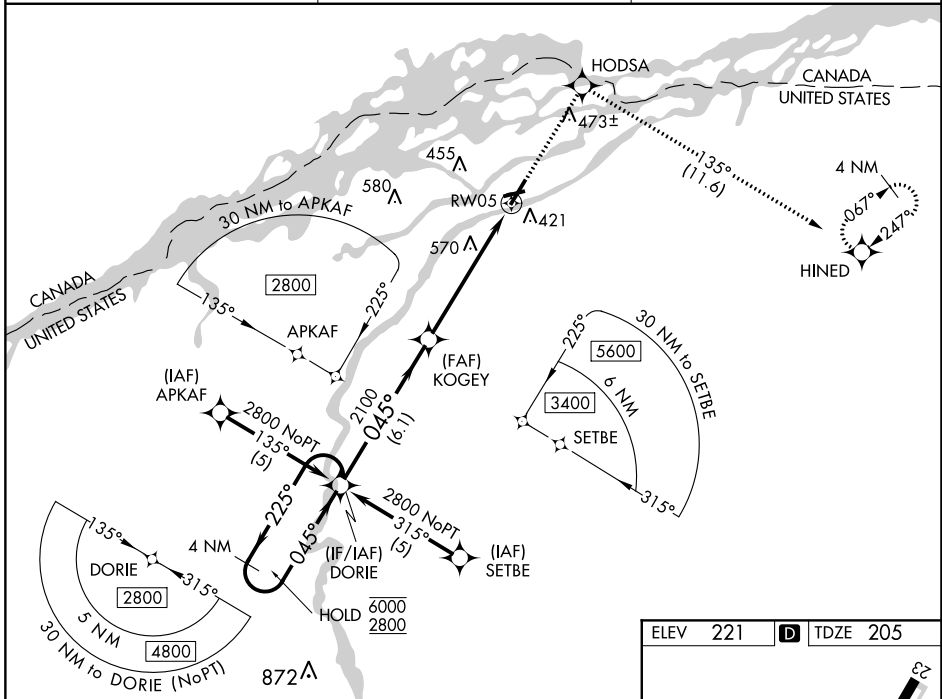
WAAS CH <b>70303</b> <b>W05A</b>	APP CRS <b>045°</b>	Rwy Idg <b>5601</b> TDZE <b>205</b> Apt Elev <b>221</b>
--	------------------------	---

# RNAV (GPS) RWY 5

MASSENA INTL-RICHARDS FLD (MSS)

RNP APCH- GPS.	MISSED APPROACH: Climb to 3000 direct HODSA and on track 135° to HINED and hold.
----------------	--

ASOS <b>128.075</b>	BOSTON CENTER <b>135.25 377.1</b>	UNICOM <b>123.0 (CTAF) 1</b>
------------------------	--------------------------------------	---------------------------------



NE-2, 26 DEC 2024 to 23 JAN 2025

NE-2, 26 DEC 2024 to 23 JAN 2025

VGSI and RNAV glidepath not coincident (VGSI Angle 3.00/TCH 55).  
4 NM Holding Pattern

DORIE

6000 ← 225°  
2800 → 045°

KOGEY 2100

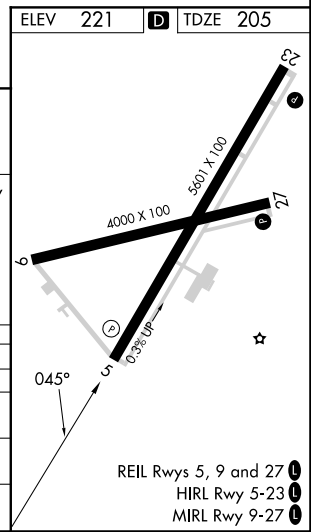
RW05

\* 1.9 NM to RW05

\* LNAV only

GP 3.00°  
TCH 54

6.1 NM      3.8 NM      1.9 NM



CATEGORY	A	B	C	D
LPV DA		455-3/4	250 (300-3/4)	
LNAV/VNAV DA		968-2 1/2	763 (800-2 1/2)	
LNAV MDA	860-1	655 (700-1)	860-1 7/8	655 (700-1 7/8)
CIRCLING	860-1	639 (700-1)	880-1 7/8 659 (700-1 7/8)	900-2 1/4 679 (700-2 1/4)