

APP CRS	Rwy Idg	4000
075°	TDZE	205
	Apt Elev	221

RNAV (GPS) RWY 9

MASSENA INTL-RICHARDS FLD (MSS)

RNP APCH - GPS.

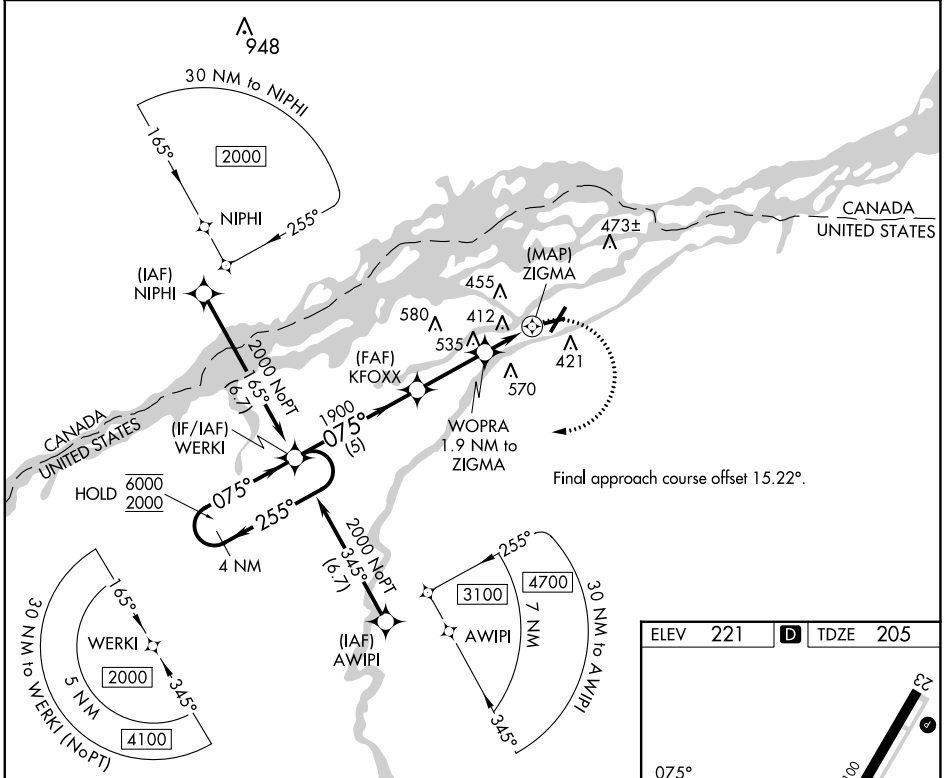
- ▼** Rwy 9 helicopter visibility reduction below 1 SM NA.
- ▲** Straight-in Rwy 9 NA at night, Circling Rwy 9, 23, 27 NA at night.

MISSED APPROACH: Climbing right turn to 2000 direct WERKI and hold.

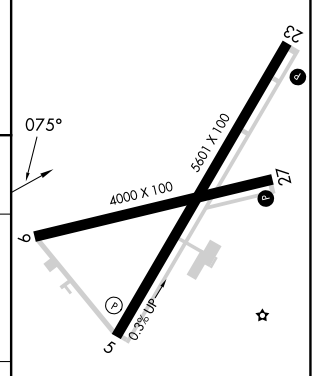
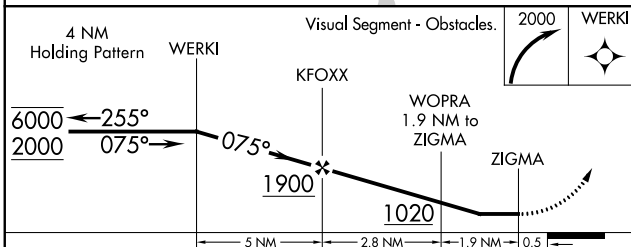
ASOS
128.075

BOSTON CENTER
135.25 377.1

UNICOM
123.0 (CTAF) 0



ELEV	221	D	TDZE	205
------	-----	----------	------	-----



CATEGORY	A	B	C	D
LNVA MDA	680-1	475 (500-1)	680-1 $\frac{3}{8}$	475 (500-1 $\frac{3}{8}$)
C CIRCLING	740-1	519 (600-1)	880-1 $\frac{3}{4}$ 659 (700-1 $\frac{3}{4}$)	880-2 659 (700-2)

- REIL Rwy 5, 9 and 27 **0**
- HIRL Rwy 5-23 **0**
- MIRL Rwy 9-27 **0**

NE-2, 26 DEC 2024 to 23 JAN 2025

NE-2, 26 DEC 2024 to 23 JAN 2025