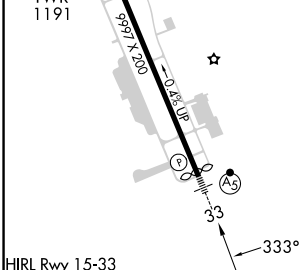
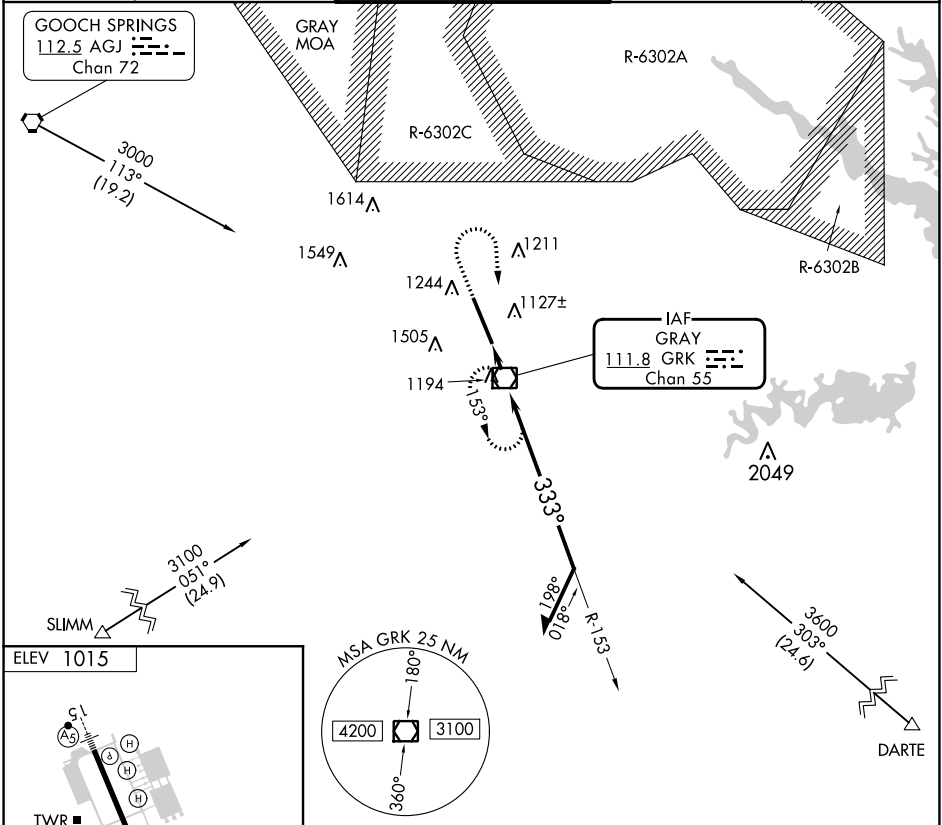


VOR/DME GRK 111.8 Chan 55	APP CRS 333°	Rwy Idg TDZE Apt Elev	N/A N/A 1015
---	------------------------	-----------------------------	---

VOR-A
ROBERT GRAY AAF (GRK)

NA Circling NA W of Rwy 15-33. MISSED APPROACH: Climb to 2000 then climbing right turn to 3000 direct GRK VOR/DME and hold.

ATIS 124.9	GRAY APP CON 120.075 323.15	GRAY TOWER 120.75(CTAF) 285.5	GND CON 121.8 279.5	CLNC DEL 126.2 251.1
----------------------	---------------------------------------	---	-------------------------------	--------------------------------



2000	3000	GRK	GRK VOR/DME	Remain within 10 NM
↑	↷	◻	↖ 153°	↘ 3000
GRK 1.4			↘ 333°	↘ 2100
1.4 NM				

FAF to MAP 1.4 NM					
Knots	60	90	120	150	180
Min:Sec	1:24	0:56	0:42	0:34	0:28
CIRCLING	1540-1 525 (600-1)		1560-1½ 545 (600-1½)	1620-2 605 (700-2)	

SC-3, 26 DEC 2024 to 23 JAN 2025

SC-3, 26 DEC 2024 to 23 JAN 2025