

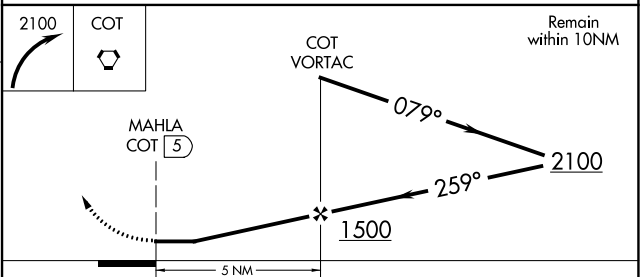
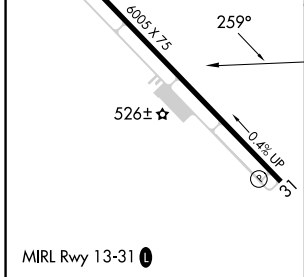
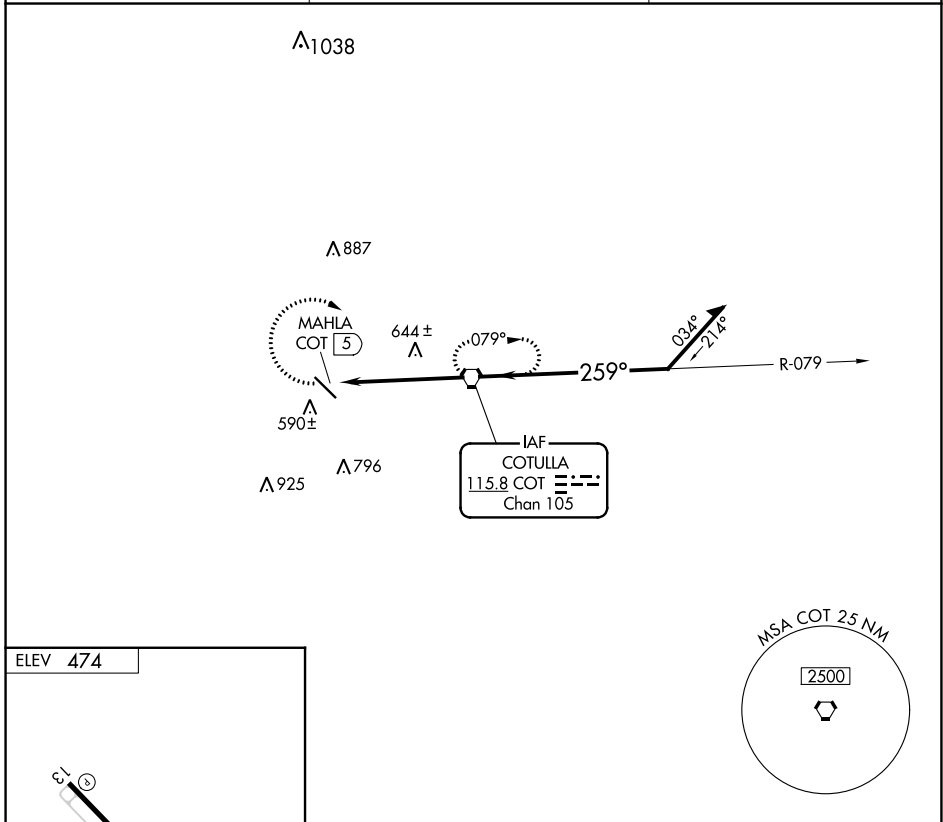
VORTAC COT <b>115.8</b> Chan <b>105</b>	APP CRS <b>259°</b>	Rwy Idg TDZE Apt Elev	<b>N/A</b> <b>N/A</b> <b>474</b>
---	------------------------	-----------------------------	--

**VOR-A**

COTULLA-LA SALLE COUNTY (COT)

<p><b>▼</b> When local altimeter setting not received, use Pleasanton Muni altimeter setting; increase all MDA 120 feet, Circling Cat C visibility ½ SM.</p>	<p><b>▲</b> MISSED APPROACH: Climbing right turn to 2100 direct COT VORTAC and hold.</p>
--	--

ASOS <b>118.325</b>	HOUSTON CENTER <b>134.6 322.5</b>	UNICOM <b>122.7 (CTAF) 0</b>
------------------------	--------------------------------------	---------------------------------



FAF to MAP 5 NM					CATEGORY	A	B	C	D
Knots	60	90	120	150	180	920-1	940-1	1120-1¾	NA
Min:Sec	5:00	3:20	2:30	2:00	1:40	446 (500-1)	466 (500-1)	646 (700-1¾)	

COTULLA, TEXAS  
Amdt 13A 08OCT20

28°27'N-99°13'W

COTULLA-LA SALLE COUNTY (COT)  
**VOR-A**

SC-3, 26 DEC 2024 to 23 JAN 2025

SC-3, 26 DEC 2024 to 23 JAN 2025