

WAAS CH 86212 W22A	APP CRS 219°	Rwy Idg TDZE Apt Elev	8001 322 322
--	------------------------	-----------------------------	---

RNAV (GPS) RWY 22

MILLINGTON/MEMPHIS (NQA)

RNP APCH - GPS.

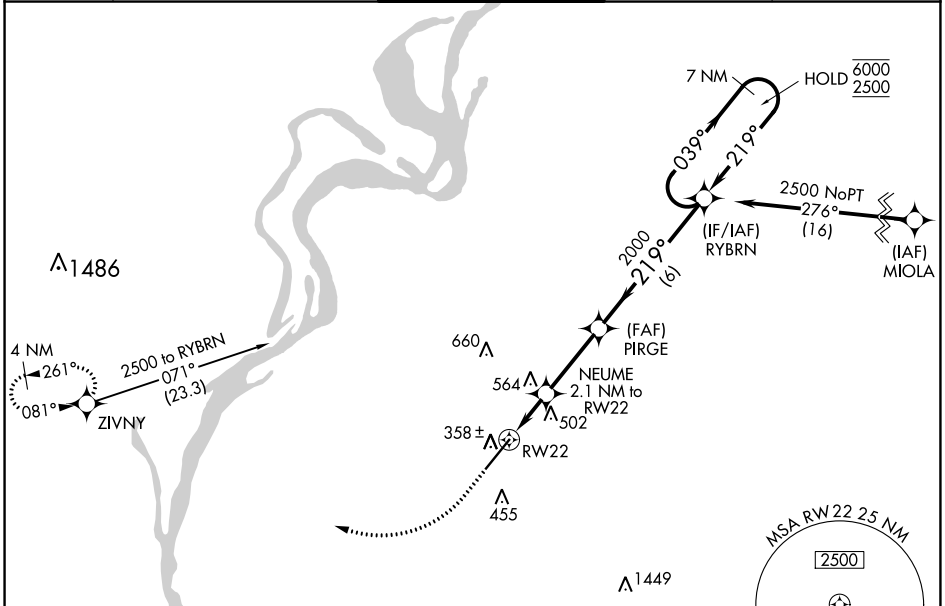
- ▼ For uncompensated Baro-VNAV systems, LNAV/VNAV NA below -15°C or above 54°C.
- ▲ For inop ALS, increase LPV Cat E visibility to ¾ SM, LNAV/VNAV all Cats visibility to 1¾ SM, and LNAV Cat E visibility to 1¾ SM.

MALSR



MISSED APPROACH:
Climb to 840 then
climbing right turn to
2500 direct ZIVNY
and hold.

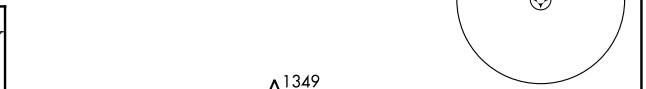
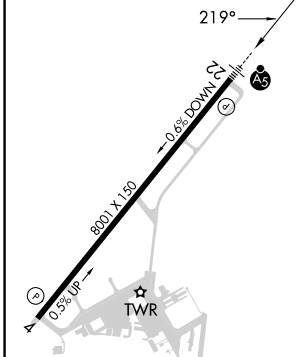
AWOS-3 118.925	MEMPHIS APP CON 119.1 291.6 125.8 338.3	MILLINGTON TOWER ★ 120.25 (CTAF) 0 340.2	GND CON 121.375	UNICOM 122.95
--------------------------	---	--	---------------------------	-------------------------



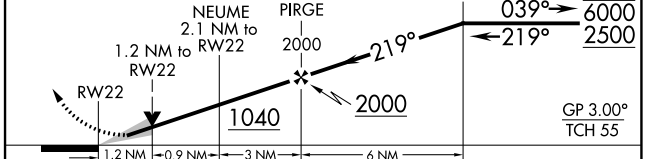
SE-1, 26 DEC 2024 to 23 JAN 2025

SE-1, 26 DEC 2024 to 23 JAN 2025

ELEV 322	TDZE 322
----------	----------



840	2500	ZIVNY	VGSI and RNAV glidepath not coincident (VGSI Angle 3.00/TCH 67).	7 NM	Holding Pattern
-----	------	-------	--	------	-----------------



CATEGORY	A	B	C	D	E
LPV DA		522-½	200 (200-½)		
LNAV/VNAV DA		784-1	462 (500-1)		
LNAV MDA	780-½	458 (500-½)	780-¾	458 (500-¾)	
<input checked="" type="checkbox"/> CIRCLING	800-1 478 (500-1)	820-1 498 (500-1)	920-1½ 598 (600-1½)	960-2 638 (700-2)	960-2¼ 638 (700-2¼)

REIL Rwy 22
REIL Rwy 4
HIRL Rwy 4-22