

WAAS CH <b>99417</b> <b>W17A</b>	APP CRS <b>173°</b>	Rwy Idg TDZE <b>1553</b> Apt Elev <b>1563</b>
--	------------------------	---

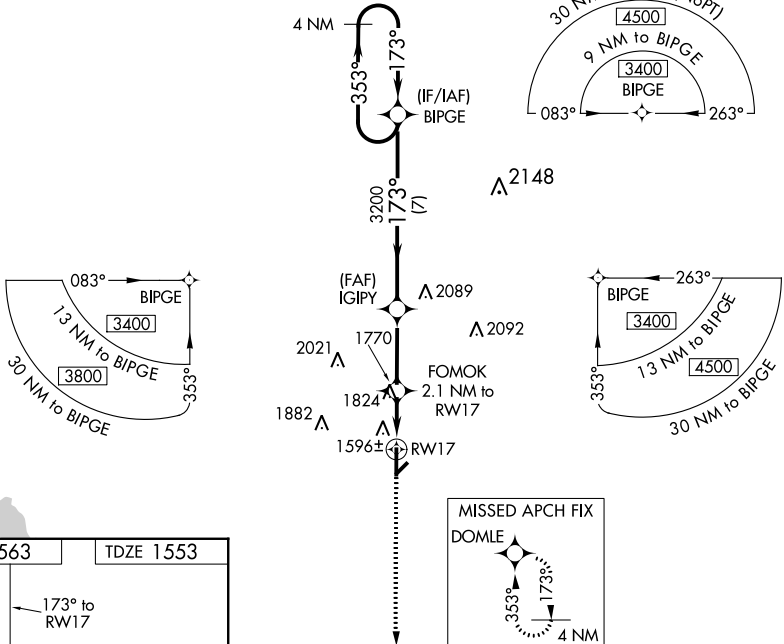
# RNAV (GPS) RWY 17

HOBART RGNL (HBR)

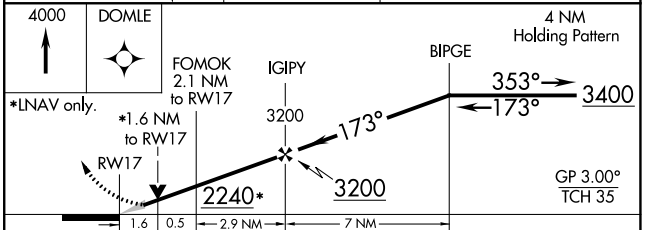
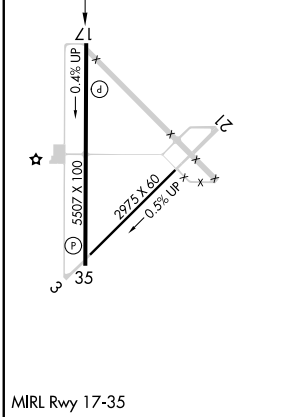
**⚠** For uncompensated Baro-VNAV systems, LNAV/VNAV NA below -18°C (0°F) or above 45°C (113°F). DME/DME RNP-0.3 NA. When local altimeter setting not received, use Altus/Quartz Mountain Rgnl altimeter setting and increase all DA 71 feet and all MDA 80 feet, increase LPV and LNAV/VNAV all Cats, LNAV Cats C and D and Circling Cat C visibility ¼ mile. Baro-VNAV NA when using Altus/Quartz Mountain altimeter setting. VDP NA with Altus/Quartz Mountain altimeter setting.

MISSED APPROACH: Climb to 4000 direct DOMLE and hold.

ASOS <b>133.325</b>	ALTUS APP CON * <b>125.1 353.7</b>	UNICOM <b>122.8</b> (CTAF)
------------------------	---------------------------------------	-------------------------------



ELEV 1563	TDZE 1553
-----------	-----------



CATEGORY	A	B	C	D
LPV DA		1803-1	250 (300-1)	
LNAV/VNAV DA		1900-1¼	347 (400-1¼)	
LNAV MDA	2080-1	527 (600-1)	2080-1½ 527 (600-1½)	2080-1¾ 527 (600-1¾)
CIRCLING	2080-1	517 (600-1)	2320-2¼ 757 (800-2¼)	2460-3 897 (900-3)