

LOC I-GNK 110.9	APP CRS 311°	Rwy ldg TDZE Apt Elev 6499 681 694
---------------------------	------------------------	--

ILS or LOC RWY 31

LAGRANGE/CALLAWAY (LGC)

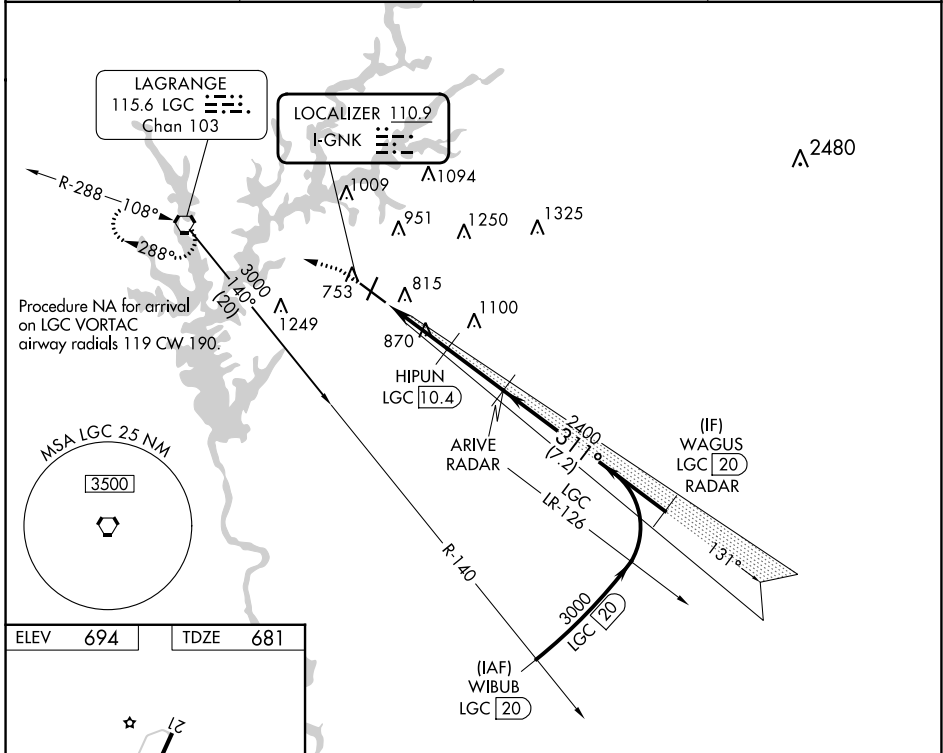
DME required for procedure entry.
RADAR and DME required for LOC only.

MALSR
A5

MISSED APPROACH: Climb to 1200 then climbing left turn to 2400 direct LGC VORTAC and hold.

NA Circling Rwy 13, 21 NA at night. DME from LGC VORTAC.
Simultaneous reception of I-GNK and LGC DME required.

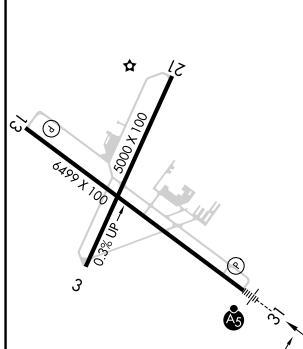
AWOS-3 126.325	ATLANTA APP CON★ 125.5 323.1	CINC DEL 119.25	UNICOM 122.975 (CTAF) 0
--------------------------	--	---------------------------	--



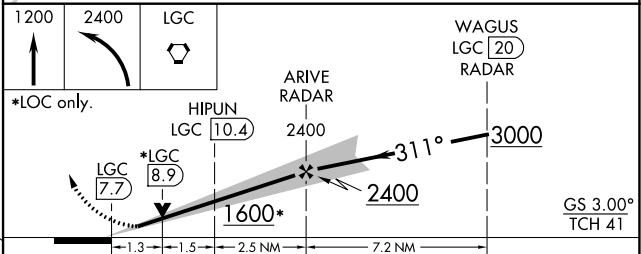
SE-4, 26 DEC 2024 to 23 JAN 2025

SE-4, 26 DEC 2024 to 23 JAN 2025

ELEV 694	TDZE 681
----------	----------



REIL Rwy 13	HIRL Rwy 13-31 0
-------------	-------------------------



CATEGORY	A	B	C	D
S-ILS 31	881-1/2		200 (200-1/2)	
S-LOC 31	1120-1/2	439 (500-1/2)	1120-3/4	439 (500-3/4)
C CIRCLING	1280-1	586 (600-1)	1540-2 1/2 846 (900-2 1/2)	1600-3 906 (1000-3)