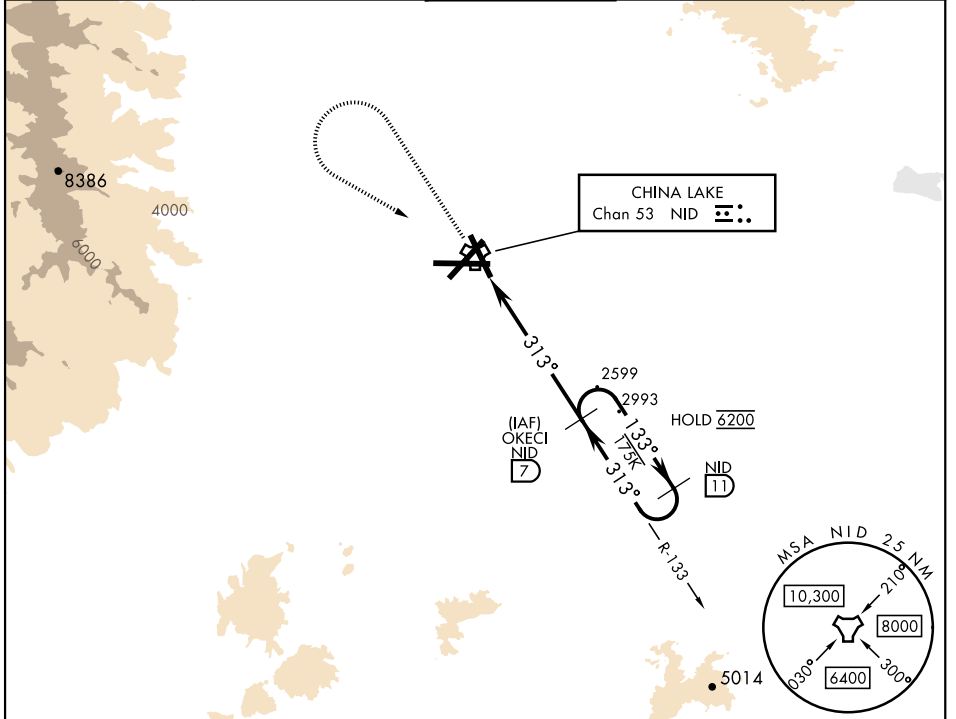


COPTER TACAN RWY 32

TACAN NID Chan 53	APCH CRS 313°	Rwy Ldg THRE Arpt Elev	9013 2241 2288
----------------------	------------------	------------------------------	----------------------

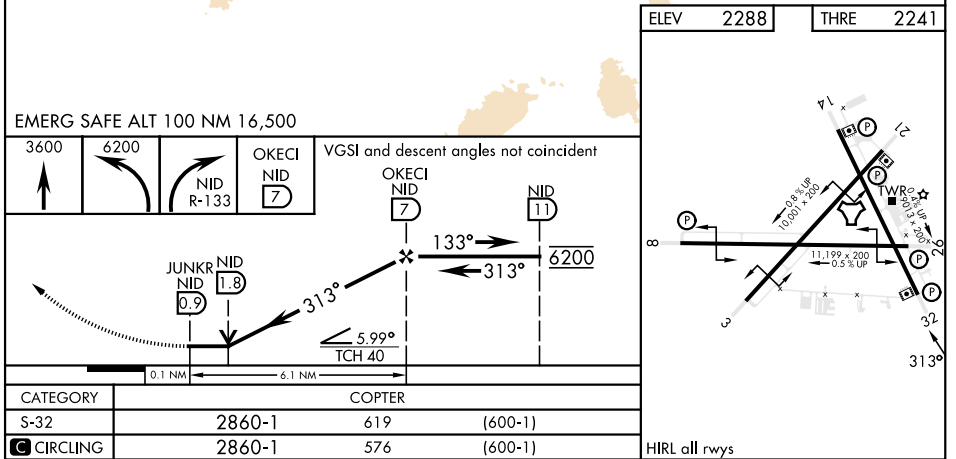
[USN] CHINA LAKE NAWS (ARMITAGE FLD) (KNID)

RADAR required		MISSED APPROACH: Climb to 3600, then climbing left turn to 6200, intercept NID TACAN R-133 to OKECI and hold. Continue climb in hold.		
▼ Limit final approach airspeed to 80 KIAS.				
ATIS ★ 322.375	JOSHUA APP CON/DEP CON 133.65 348.7	TOWER ★ 120.15 340.2	GND CON 350.3	CLNC DEL 254.25



SW-3, 26 DEC 2024 to 23 JAN 2025

SW-3, 26 DEC 2024 to 23 JAN 2025



COPTER TACAN RWY 32