

RIDGECREST, CALIFORNIA

HI-TACAN RWY 32

TACAN NID Chan 53	APCH CRS 313°	Rwy ldg TDZE Arprt Elev	9013 2241 2288
----------------------	------------------	-------------------------------	----------------------

- (USN) CHINA LAKE NAW'S (ARMITAGE FLD) (KNID)

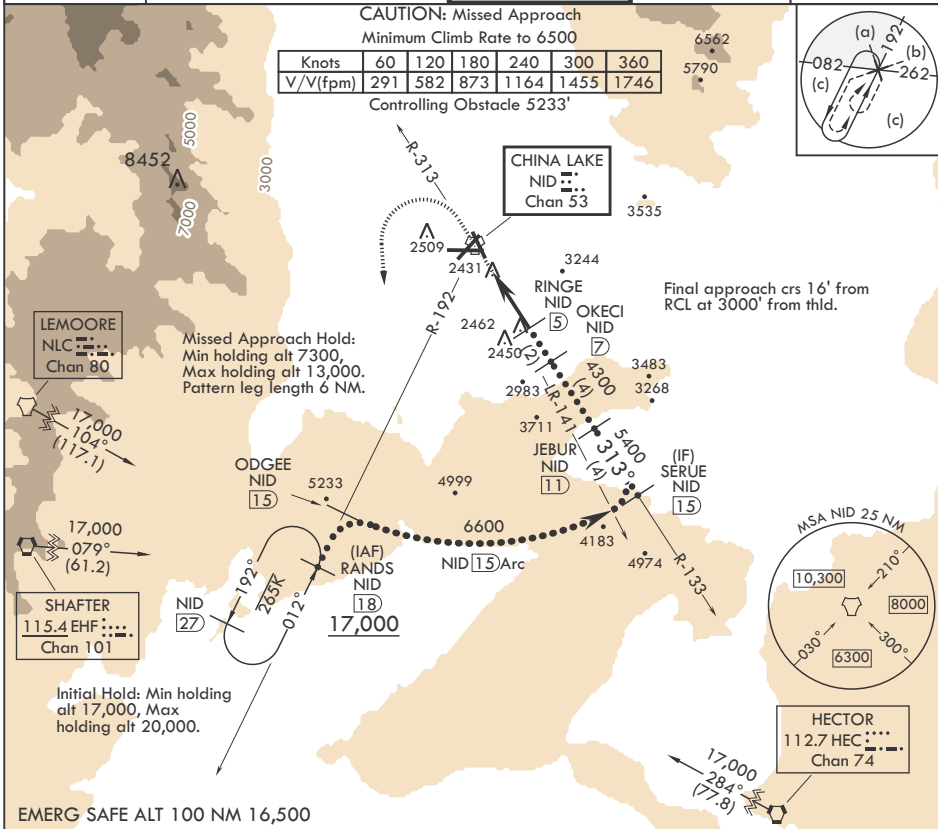
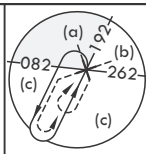
MISSED APPROACH: Climb to 3600 then a climbing left turn to 7300 to intercept China Lake TACAN R-192 to RANDS and hold.

ATIS★ 322.375	JOSHUA APP CON/DEP CON 133.65 348.7	TOWER★ 120.15 340.2	GND CON 350.3	CLNC DEL 254.25
------------------	----------------------------------------	------------------------	------------------	--------------------

CAUTION: Missed Approach
Minimum Climb Rate to 6500

Knots	60	120	180	240	300	360
V/V(fpm)	291	582	873	1164	1455	1746

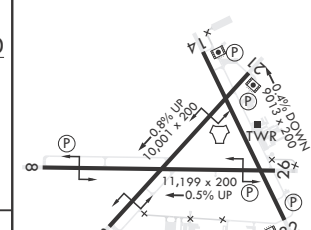
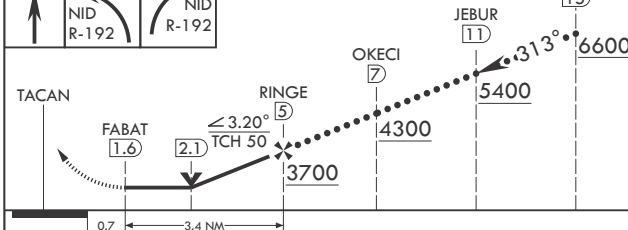
Controlling Obstacle 5233'



SW-3, 26 DEC 2024 to 23 JAN 2025

SW-3, 26 DEC 2024 to 23 JAN 2025

3600	7300	SERUE NID (15)	ELEV 2288	TDZE 2241
------	------	----------------	-----------	-----------



CATEGORY	C	D	E
S-32	2720-1 $\frac{3}{8}$	479	(500-1 $\frac{3}{8}$)
CIRCLING	2820-1 $\frac{1}{2}$ 536 (600-1 $\frac{1}{2}$)	3500-3 1216 (1300-3)	NA

HIRL all Rwy's

RIDGECREST, CALIFORNIA

35°41'N - 117°42'W

CHINA LAKE NAW'S (ARMITAGE FLD) (KNID)

Amdt 5 10SEP20

HI-TACAN RWY 32