

SALTD SEVEN DEPARTURE (SALTD7.SALTD)

CHINA LAKE NAWES (ARMITAGE FLD) (KNID)

[USN] RIDGECREST, CALIFORNIA

ATIS *322.375
CLNC DEL
254.25
GND CON
350.3

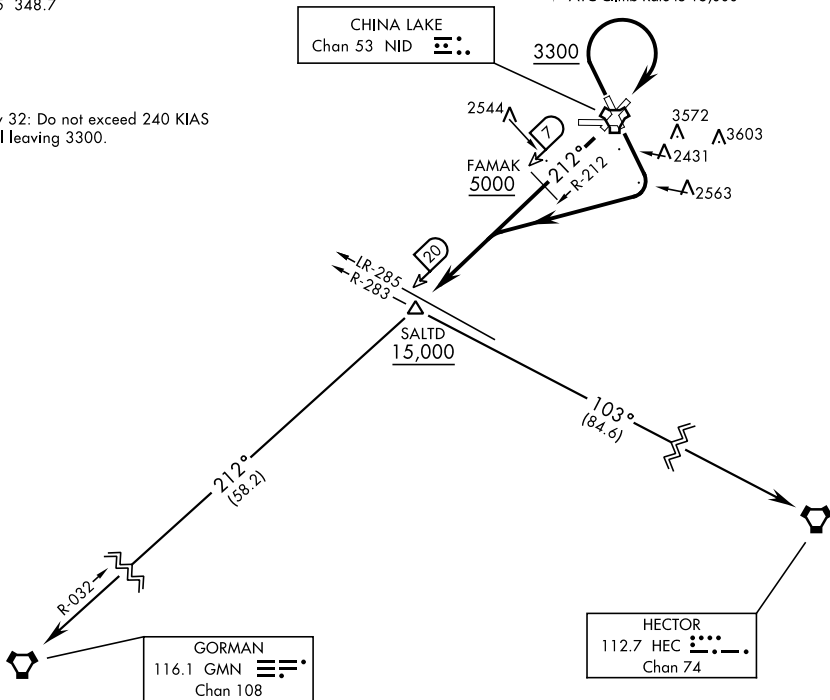
9961

CHINA LAKE TOWER *
120.15 340.2
JOSHUA DEP CON
133.65 348.7

Rwy	Knots	60	120	180	240	300	360
*14	V/V(fpm)	266	532	798	1064	1330	1596
†14	V/V(fpm)	620	1240	1860	2480	3100	3720
†21	V/V(fpm)	675	1350	2025	2700	3375	4050
†32	V/V(fpm)	496	992	1488	1984	2480	2976

* Minimum Climb Rate to 6200
† ATC Climb Rate to 15,000

Rwy 32: Do not exceed 240 KIAS until leaving 3300.



SW-3, 26 DEC 2024 to 23 JAN 2025

SW-3, 26 DEC 2024 to 23 JAN 2025

DEPARTURE ROUTE DESCRIPTION

TAKEOFF RUNWAY 14: Climbing right turn to intercept NID TACAN R-212, then direct SALTD. From SALTD, proceed via assigned transition or RADAR vectors to join assigned route. Cross SALTD at or above 15,000. Thence...

TAKEOFF RUNWAY 21: Climb via NID TACAN R-212 to FAMA K, then direct SALTD. From SALTD, proceed via assigned transition or RADAR vectors to join assigned route. Cross FAMA K at or above 5,000 and cross SALTD at or above 15,000. Thence...

TAKEOFF RUNWAY 32: Climb via NID TACAN R-322 to 3300 then climbing right turn direct NID, then via NID R-212 to FAMA K, then direct SALTD. From SALTD, proceed via assigned transition or RADAR vectors to join assigned route. Cross FAMA K at or above 5000 and cross SALTD at or above 15,000. Thence...

GORMAN TRANSITION (SALTD7.GMN): Via GMN VORTAC R-032 to GMN.

HECTOR TRANSITION (SALTD7.HEC): Via HEC VORTAC R-283 to HEC.

SALTD SEVEN DEPARTURE (SALTD7.SALTD)

RIDGECREST, CALIFORNIA