

RNAV (GPS) RWY 14

WAAS Chan 91240 W14A	APCH CRS 140°	Rwy ldg TDZE Arprt Elev 8000 32 37
--	-------------------------	--

[USN]

BEAUFORT MCAS (MERRITT FLD) (KNBC)

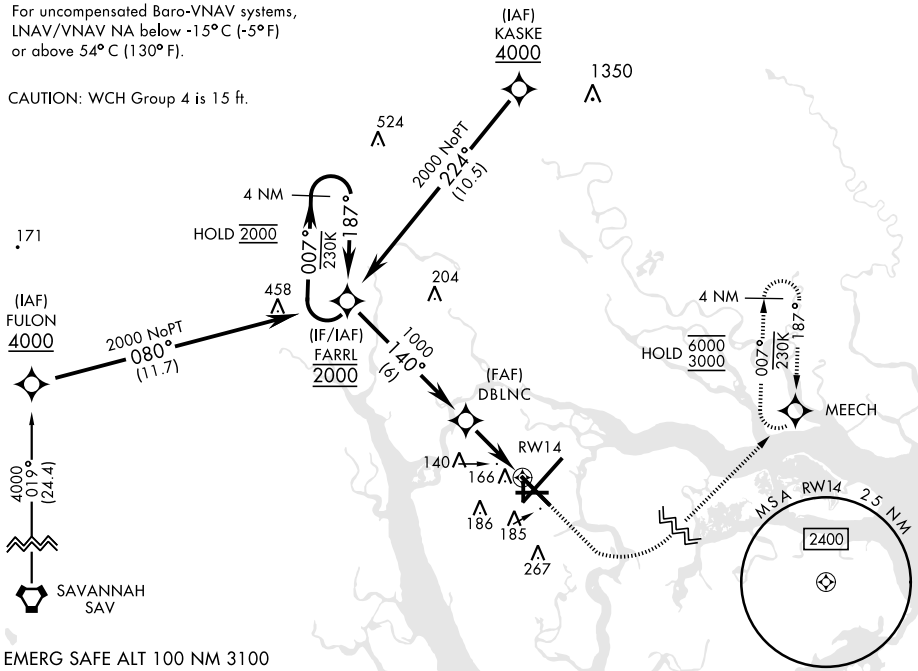
RNP APCH
RADAR required for arrivals via KASKE or FARRL IAFs.

MISSED APPROACH: Climb to 700, then climbing left turn to 3000 direct MEECH and hold.

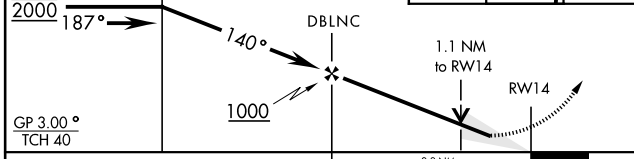
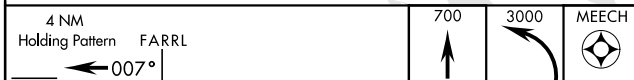
ATIS ★ 279.525	APP CON (ABV 3000) 125.125 292.125 (3000 and BLW) 123.7 269.125	TOWER ★ 119.05 342.875	GND CON 128.15 348.625	CLNC DEL 128.15 254.375	ASR/ PAR
--------------------------	---	----------------------------------	----------------------------------	-----------------------------------	-------------

For uncompensated Baro-VNAV systems,
LNAV/VNAV NA below -15°C (-5°F)
or above 54°C (130°F).

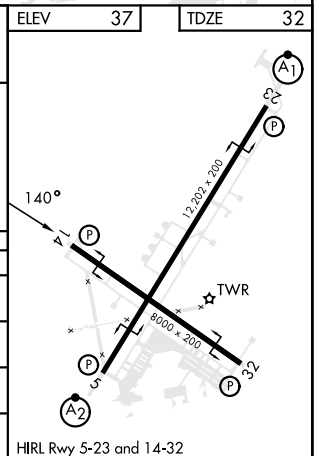
CAUTION: WCH Group 4 is 15 ft.



EMERG SAFE ALT 100 NM 3100



CATEGORY	A	B	C	D
LPV DA	232-¾		200	(200-¾)
LNAV/VNAV DA	416-1½		384	(400-1½)
LNAV MDA	420-1	388 (400-1)	420-1½	388 (400-1½)
C CIRCLING	560-1	523 (600-1)	580-1½	543 (600-1½)
			600-2	563 (600-2)



RNAV (GPS) RWY 14

SE-2, 26 DEC 2024 to 23 JAN 2025

SE-2, 26 DEC 2024 to 23 JAN 2025