

TACAN RWY 14

TACAN NBC Chan 42	APCH CRS 127°	Rwy Idg TDZE Arprt Elev	8000 32 37
-----------------------------	-------------------------	-------------------------------	---------------------------------------

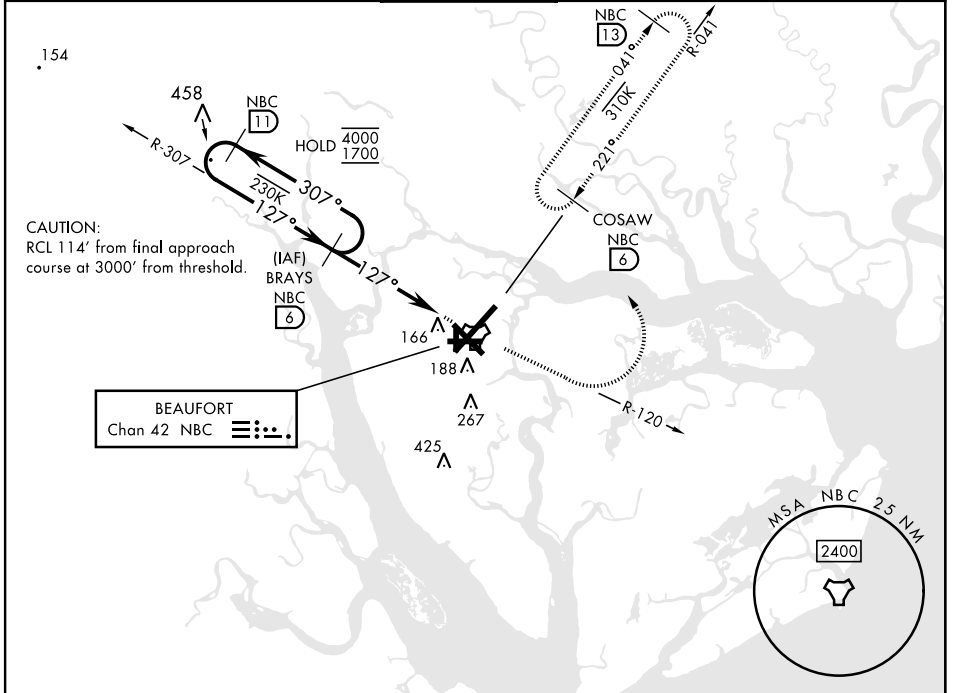
[USN]

BEAUFORT MCAS (MERRITT FLD) (KNBC)

RADAR required
▼

MISSED APPROACH: Climb to 1600 on NBC TACAN R-120, then climbing left turn to 3000 via hdg 330° to intercept NBC R-041 to 6 DME (COSAW) and hold. Continue climb in hold to 3000.

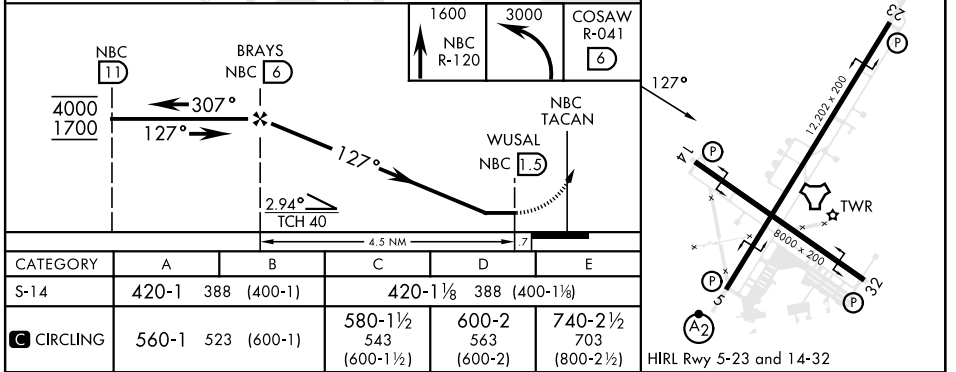
ATIS★ 279.525	APP CON 125.125 292.125 (ABV 3000) 123.7 269.125 (3000 and BLW)	TOWER★ 119.05 342.875	GND CON 128.15 348.625	CLNC DEL 128.15 254.375	ASR/PAR
-------------------------	---	---------------------------------	----------------------------------	-----------------------------------	---------



SE-2, 26 DEC 2024 to 23 JAN 2025

SE-2, 26 DEC 2024 to 23 JAN 2025

ELEV	37	TDZE	32
------	----	------	----



TACAN RWY 14