

# TACAN RWY 5

TACAN NBC Chan <b>42</b>	APCH CRS <b>054°</b>	Rwy ldg <b>12,202</b> TDZE <b>37</b> Arprt Elev <b>37</b>
-----------------------------	-------------------------	---

[USN]

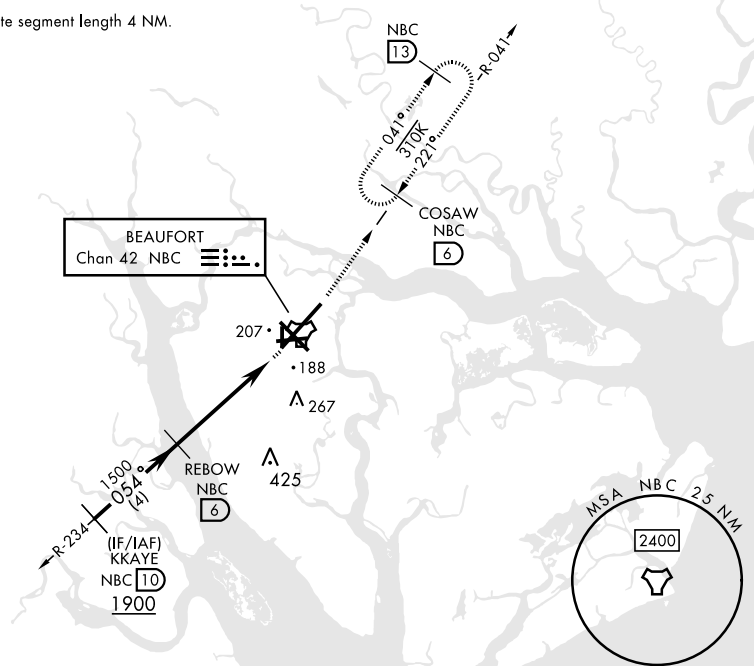
BEAUFORT MCAS (MERRITT FLD) (KNBC)

RADAR required	SALSF 	MISSED APPROACH: Climb to 1000, then climbing left turn to 3000 via NBC TACAN R-041 to COSAW and hold. Continue climb-in-hold to 3000.
----------------	-----------	--

ATIS ★ <b>279.525</b>	APP CON <b>125.125 292.125</b> (ABV 3000) <b>123.7 269.125</b> (3000 and BLW)	TOWER ★ <b>119.05 342.875</b>	GND CON <b>128.15 348.625</b>	CLNC DEL <b>128.15 254.375</b>	ASR/PAR
--------------------------	---	----------------------------------	----------------------------------	-----------------------------------	---------

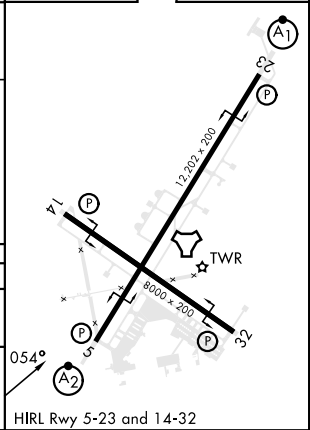
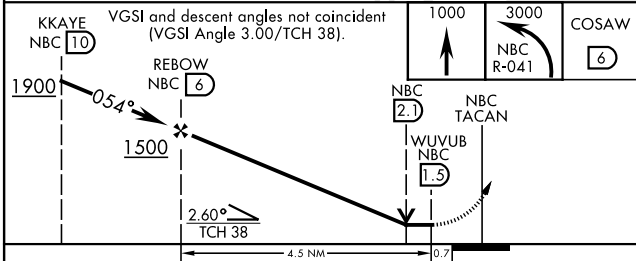
CAUTION: Intermediate segment length 4 NM.

154



EMERG SAFE ALT 100 NM 3100

ELEV	37	TDZE	37
------	----	------	----



CATEGORY	A	B	C	D	E
S-5 *	480-¾ 443 (500-¾)		480-1	443	(500-1)
CIRCLING	560-1 523 (600-1)		580-1½ 543 (600-1½)	600-2 563 (600-2)	740-2½ 703 (800-2½)

# TACAN RWY 5

SE-2, 26 DEC 2024 to 23 JAN 2025

SE-2, 26 DEC 2024 to 23 JAN 2025