


LOC/DME I-FNU <b>110.15</b> Chan <b>38</b> (Y)	APP CRS <b>275°</b>	Rwy Idg <b>11002</b> TDZE <b>45</b> Apt Elev <b>55</b>
--	------------------------	--

# ILS or LOC RWY 27R

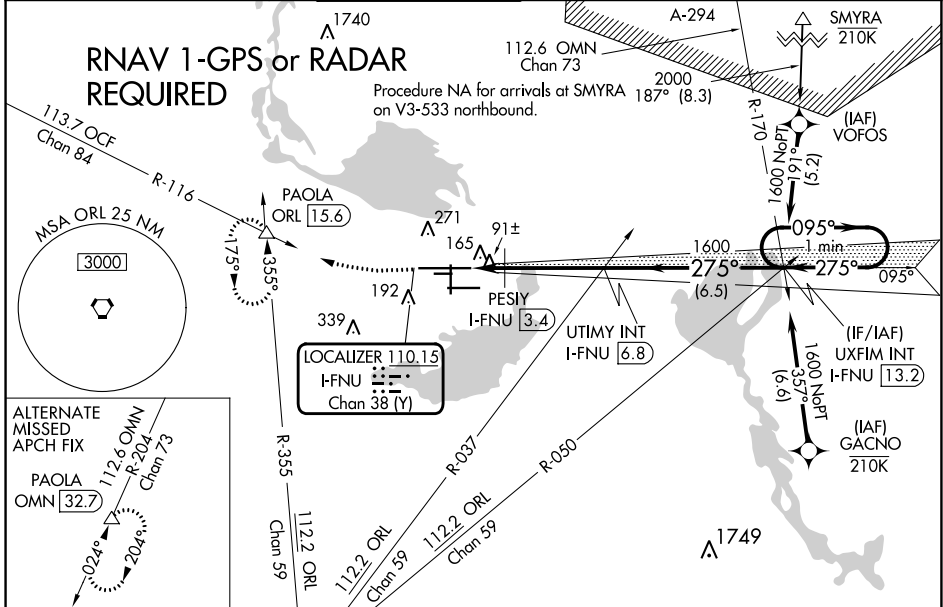
ORLANDO SANFORD INTL (SFB)

**▼** For inop ALS, increase PESIY FIX minimums  
**▲** Cat C/D visibility to 1 SM.

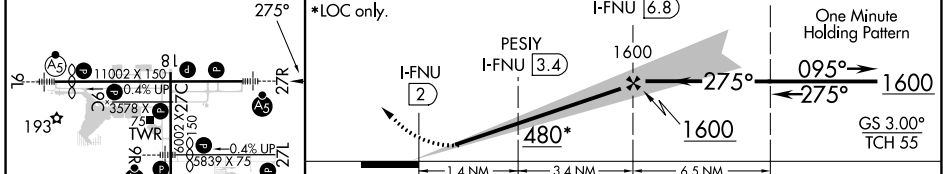
**MALSR**  


**MISSED APPROACH:** Climb to 500 then climbing right turn to 2800 on heading 280° and ORL VORTAC R-355 to PAOLA INT/ORL 15.6 DME and hold, continue climb-in-hold to 2800.

ATIS <b>125.975</b>	ORLANDO APP CON <b>135.3 351.9</b> (NORTH) <b>119.775 351.9</b> (SOUTH)	SANFORD TOWER* <b>120.3</b> (CTAF) <b>0 254.35</b>	GND CON <b>121.35 254.35</b>	CLNC DEL <b>123.975</b>	CLNC DEL <b>121.35</b> (when twr closed)
------------------------	---	---	---------------------------------	----------------------------	--



ELEV 55	<b>D</b>	TDZE 45	500	2800	PAOLA ORL R-355	VGSI and ILS glidepath not coincident (VGSI Angle 3.00/TCH 72).
---------	----------	---------	-----	------	-----------------	---



CATEGORY	A	B	C	D
S-ILS 27R	245-1/2 200 (200-1/2)			
S-LOC 27R	480-1/2	435 (500-1/2)	480-3/4	435 (500-3/4)
<b>C</b> CIRCLING	580-1	525 (600-1)	600-1/2 545 (600-1/2)	640-2 585 (600-2)
<b>PESIY FIX MINIMUMS</b>				
S-LOC 27R	400-1/2	355 (400-1/2)	400-5/8	355 (400-5/8)
<b>C</b> CIRCLING	580-1	525 (600-1)	600-1/2 545 (600-1/2)	640-2 585 (600-2)

ORLANDO, FLORIDA  
 Amdt 4 12OCT17

28°47'N-81°14'W

# ORLANDO SANFORD INTL (SFB) ILS or LOC RWY 27R

SE-3, 26 DEC 2024 to 23 JAN 2025

SE-3, 26 DEC 2024 to 23 JAN 2025