

LOC/DME I-SND 108.9 Chan 26	APP CRS 095°	Rwy ldg TDZE 55 Apt Elev 55	10002
--	------------------------	---	--------------

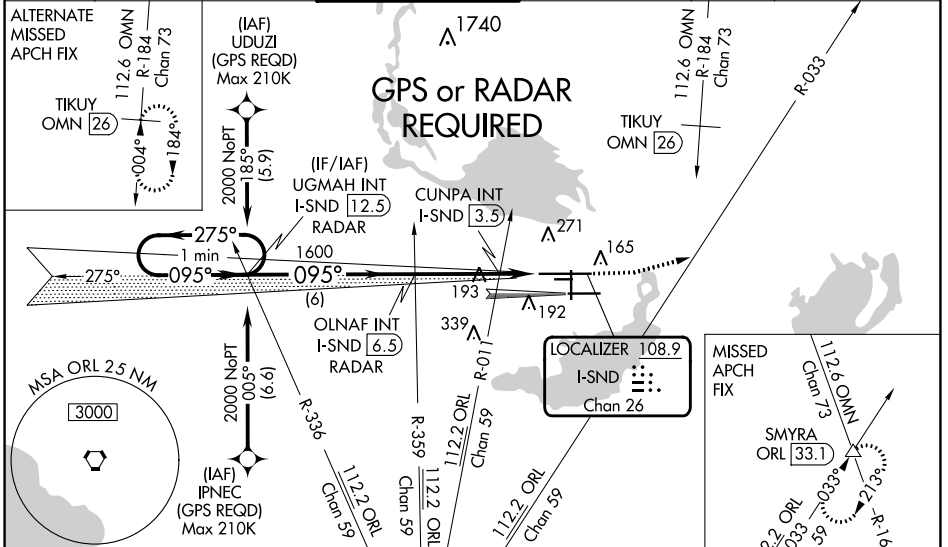
ILS or LOC RWY 9L

ORLANDO SANFORD INTL (SF'B)

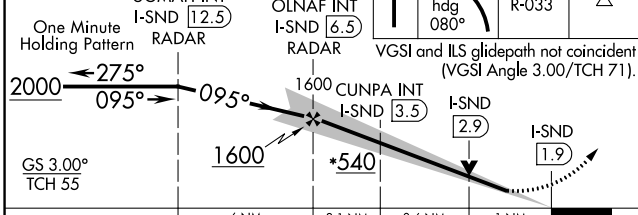
⚠ VDP NA with Exec altimeter setting. When local altimeter setting not received, use Exec altimeter setting: increase DA to 298 feet; increase all MDAs 60 feet and visibility Cats C and D ½ SM. Simultaneous approach authorized with Rwy 9R. Circling to Rwy 27C NA at night.

MALS
MISSED APPROACH: Climb to 500 then climbing left turn to 2000 on heading 080° and ORL VORTAC R-033 to SMYRA INT/ORL 33.1 DME and hold.

ATIS 125.975	ORLANDO APP CON 135.3 351.9 (NORTH) 119.775 351.9 (SOUTH)	SANFORD TOWER* 120.3 (CTAF) 0 254.35	GND CON 121.35 254.35	CLNC DEL 123.975	CLNC DEL 121.35 (when twr closed)
------------------------	---	---	---------------------------------	----------------------------	--

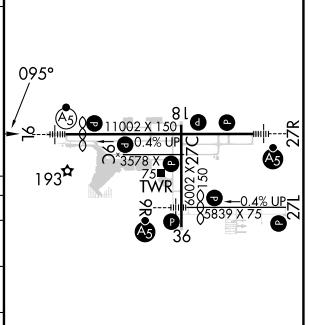


*600 when using Exec altimeter setting.	500	2000	SMYRA
UGMAH INT I-SND 12.5	ORL R-033	△	



ELEV 55	TDZE 55
---------	---------

CATEGORY	A	B	C	D
S-ILS 9L	255-½ 200 (200-½)			
S-LOC 9L	540-½	485 (500-½)	540-1	485 (500-1)
C CIRCLING	580-1	525 (600-1)	600-1½ 545 (600-1½)	640-2 585 (600-2)
CUNPA FIX MINIMUMS (DUAL VOR RECEIVER OR DME REQUIRED)				
S-LOC 9L	460-½	405 (500-½)	460-¾	405 (500-¾)
C CIRCLING	580-1	525 (600-1)	600-1½ 545 (600-1½)	640-2 585 (600-2)



MIRL Rwy 9C-27C and 18-36	ⓘ
HIRL Rwy 9L-27R and 9R-27L	ⓘ
REIL Rwys 9C, 18, 27L and 36	ⓘ
FAF to MAP 4.7 NM	
Knots	60 90 120 150 180
Min:Sec	4:42 3:08 2:21 1:53 1:34

SE-3, 26 DEC 2024 to 23 JAN 2025

SE-3, 26 DEC 2024 to 23 JAN 2025