


WAAS CH <b>78409</b> <b>W09A</b>	APP CRS <b>095°</b>	Rwy ldg <b>10002</b> TDZE <b>55</b> Apt Elev <b>55</b>
-------------------------------------	---------------------	--

# RNAV (GPS) RWY 9L

ORLANDO SANFORD INTL (SF'B)

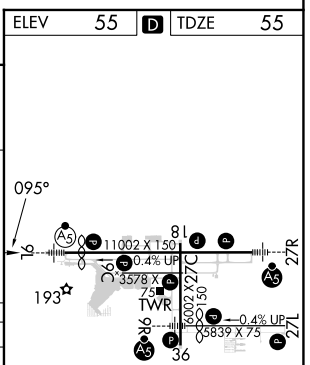
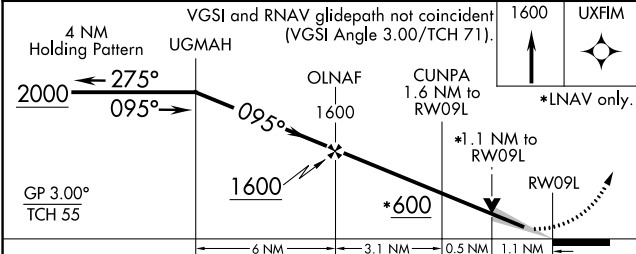
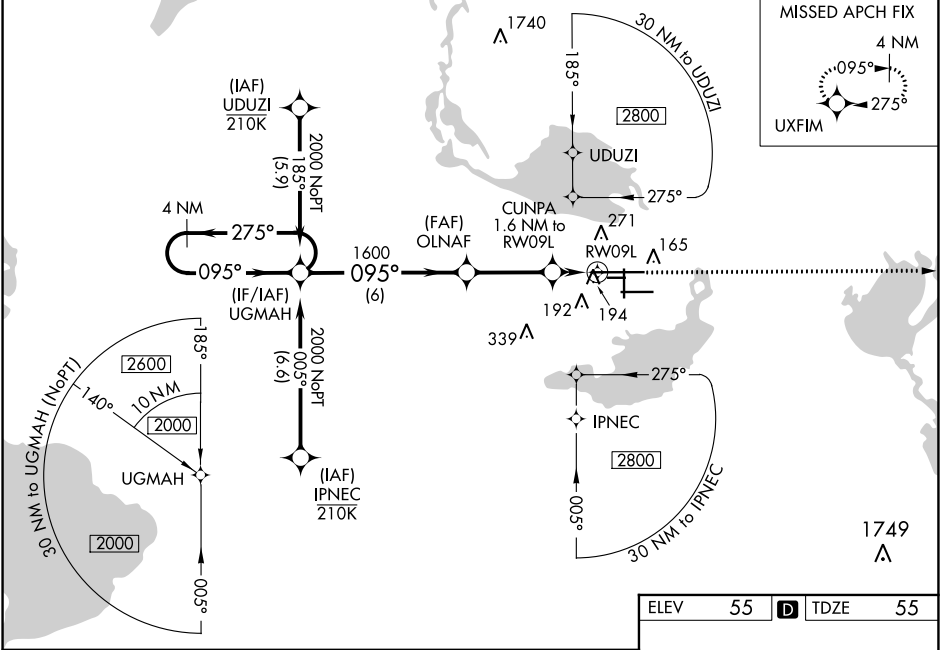
RNP APCH.

**⚠** For uncompensated Baro-VNAV systems, LNAV/VNAV NA below 0°C or above 54°C. Baro-VNAV and VDP NA when using Exec altimeter setting. When local altimeter setting not received, use Exec altimeter setting and increase LPV DA to 282, LNAV/VNAV DA to 501 and all MDA 60 feet; increase LNAV/VNAV all Cats visibilities 1/8 SM and LNAV Cat C/D visibility 1/4 SM. Night landing: Rwy 27C NA.

MALSR 

MISSED APPROACH: Climb to 1600 direct UXFIM and hold.

ATIS <b>125.975</b>	ORLANDO APP CON <b>135.3 351.9</b> (NORTH) <b>119.775 351.9</b> (SOUTH)	SANFORD TOWER ★ <b>120.3</b> (CTAF) <b>0 254.35</b>	GND CON <b>121.35 254.35</b>	CLNC DEL <b>123.975</b>	CLNC DEL <b>121.35</b> (when twr closed)
---------------------	--	---	------------------------------	-------------------------	---



CATEGORY	A	B	C	D
LPV DA		255-1/2	200 (200-1/2)	
LNAV/VNAV DA		355-1/2	300 (300-1/2)	
LNAV MDA	460-1/2 405 (500-1/2)		460-3/4 405 (500-3/4)	
<b>C</b> CIRCLING	580-1 525 (600-1)		600-1 1/2 545 (600-1 1/2)	640-2 585 (600-2)

MIRL Rwy 9C-27C and 18-36 **L**  
HIRL Rwy 9L-27R and 9R-27L **L**  
REIL Rwsy 9C, 18, 27L and 36

SE-3, 26 DEC 2024 to 23 JAN 2025

SE-3, 26 DEC 2024 to 23 JAN 2025