

HI-TACAN Z RWY 35R

TACAN NQI Chan 125	APCH CRS 004°	Rwy Idg TDZE 48 Arprt Elev 50
------------------------------	-------------------------	---

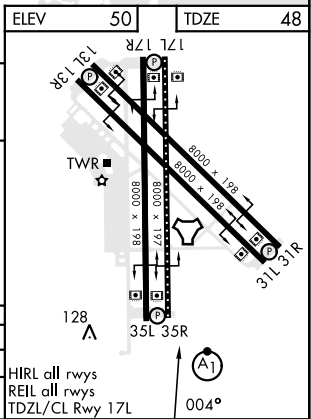
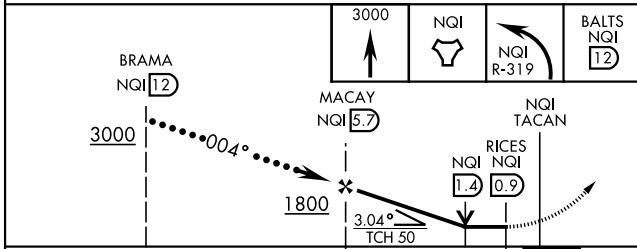
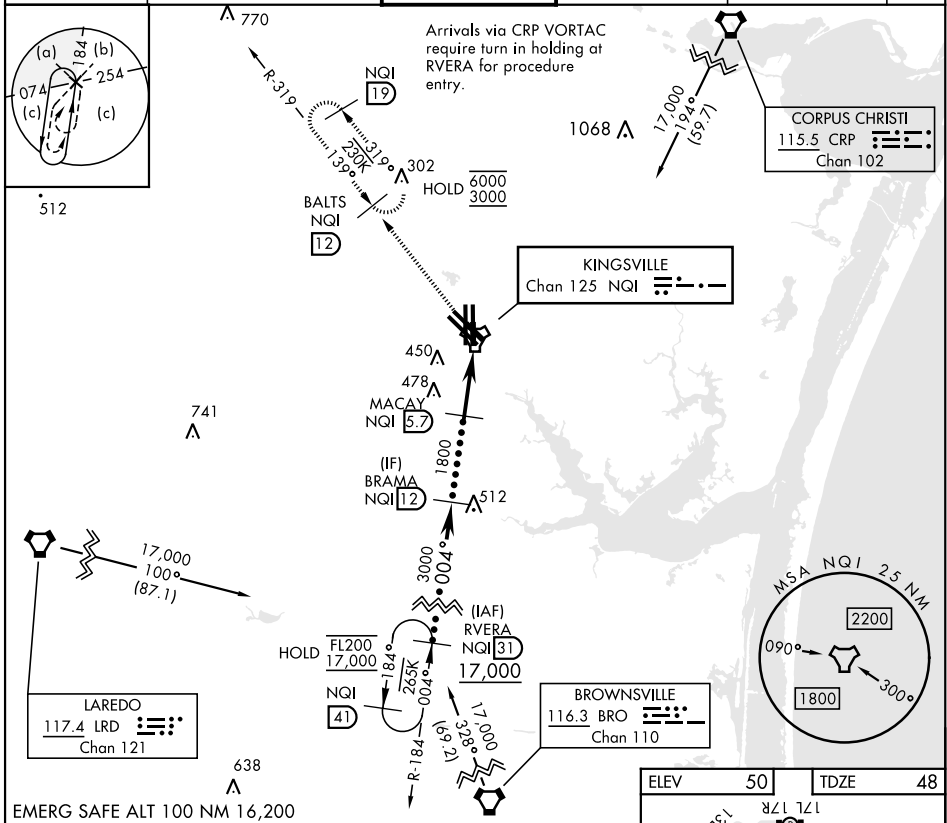
[USN]

KINGSVILLE NAS (KNQI)

▼ * When ALS inop, increase CAT CDE vis to 1 mile.
 ALSF-1

MISSED APPROACH: Climb to 3000 direct NQI TACAN and climbing left turn to intercept NQI R-319 to BALTS and hold. Continue climb-in-hold to 3000.

ATIS ★ 282.25	APP CON 119.9 290.45	TOWER ★ 124.1 377.05	GND CON 239.05	CLNC DEL 328.4	ASR/ PAR
-------------------------	--------------------------------	--------------------------------	--------------------------	--------------------------	-------------



CATEGORY	C	D	E
S-35R*	420-3/4	372 (400-3/4)	
CIRCLING	760-2 710 (800-2)	760-2 1/4 710 (800-2 1/4)	760-2 1/2 710 (800-2 1/2)

HI-TACAN Z RWY 35R

SC-3, 26 DEC 2024 to 23 JAN 2025

SC-3, 26 DEC 2024 to 23 JAN 2025