

APP CRS	Rwy Idg	<b>7615</b>
<b>024°</b>	TDZE	<b>6346</b>
	Apt Elev	<b>6352</b>

# RNAV (GPS) RWY 2

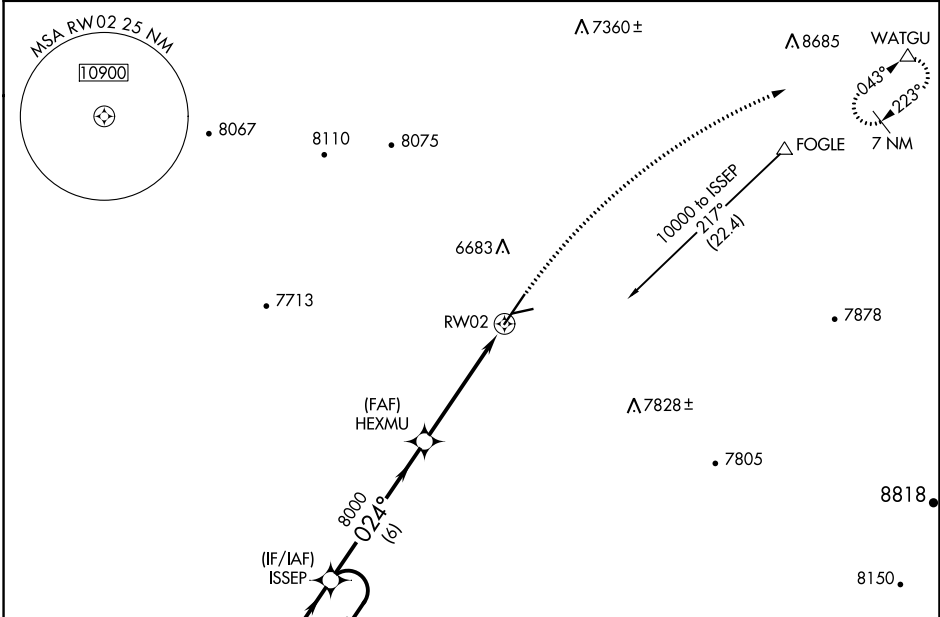
RATON MUNI/CREWS FLD (RTN)

RNP APCH-GPS.

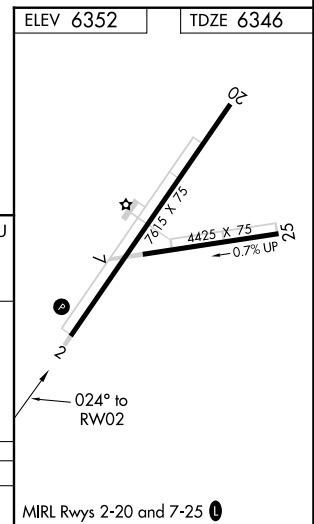
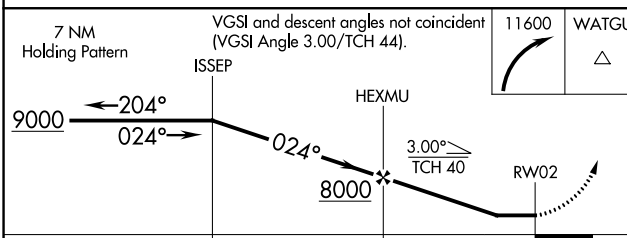
Procedure NA at night.  
Rwy 2 helicopter visibility reduction below 1 SM NA.

MISSED APPROACH: Climbing right turn to 11600 direct WATGU and hold, continue climb-in-hold to 11600.

ASOS <b>118.375</b>	ALBUQUERQUE CENTER <b>132.8 346.35</b>	UNICOM <b>122.8 (CTAF)</b>
------------------------	---	-------------------------------



Procedure NA for arrivals at CIM VORTAC on V611 south bound.



CATEGORY	A	B	C	D
LNAV MDA	7020-1 674 (700-1)	7020-2 674 (700-2)		

MIRL Rwy 2-20 and 7-25

SW-1, 26 DEC 2024 to 23 JAN 2025

SW-1, 26 DEC 2024 to 23 JAN 2025