

OXNARD, CALIFORNIA

RNAV (GPS) RWY 21

APCH CRS	Rwy Idg	11,102
212°	TDZE	13
	Arprt Elev	13

-(USN)

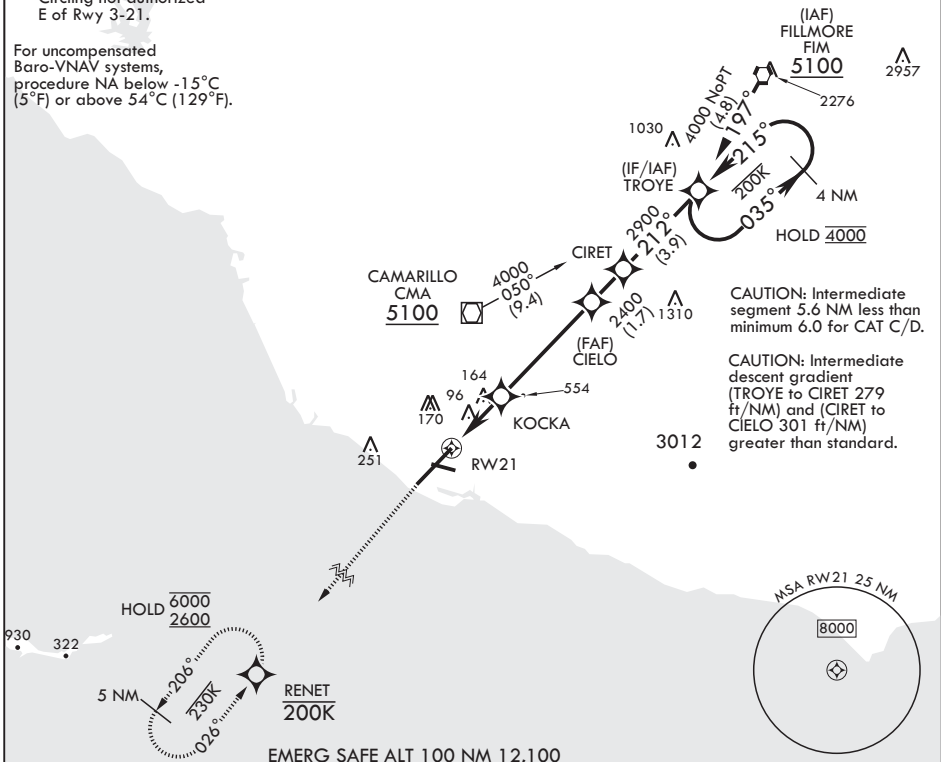
POINT MUGU NAS (NAVAL BASE VENTURA CO) (KNTD)

RNP APCH	MALSR	MISSED APPROACH: Climb to 600 then climbing left turn to 2600 direct RENET and hold.
<p>▼ * When ALS inop, increase vis to 7/8 mile. ** When ALS inop, increase CAT AB vis to 1 mile; CAT CD vis to 1 3/8 miles.</p>		AS

ATIS*	APP CON/DEP CON	TOWER*	GND CON	CLNC DEL	ASR/PAR
125.55 363.05	128.65 307.275	124.85 290.375	121.6 360.2	120.75 279.55	

*** Circling not authorized E of Rwy 3-21.

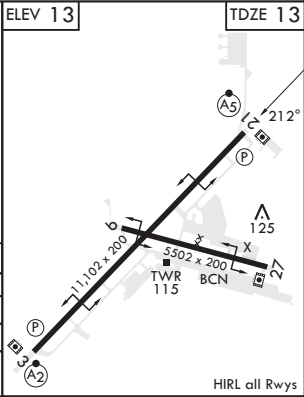
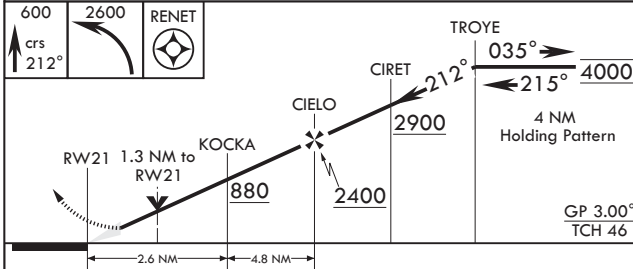
For uncompensated Baro-VNAV systems, procedure NA below -15°C (5°F) or above 54°C (129°F).



CAUTION: Intermediate segment 5.6 NM less than minimum 6.0 for CAT C/D.

CAUTION: Intermediate descent gradient (TROYE to CIRET 279 ft/NM) and (CIRET to CIELO 301 ft/NM) greater than standard.

EMERG SAFE ALT 100 NM 12,100



CATEGORY	A	B	C	D
LNAV/VNAV DA*	289-1/2	276	(300-1/2)	
LNAV MDA**	460-1/2 447 (500-1/2)	460-1/8 447 (500-1/8)		
CIRCLING***	460-1 447 (500-1)	520-1 507 (600-1)	520-1 1/2 507 (600-1 1/2)	600-2 587 (600-2)

OXNARD, CALIFORNIA

34°07'N - 119°07'W POINT MUGU NAS (NAVAL BASE VENTURA CO) (KNTD)

Amdt 7 29DEC22

RNAV (GPS) RWY 21

SW-3, 26 DEC 2024 to 23 JAN 2025

SW-3, 26 DEC 2024 to 23 JAN 2025