

OXNARD, CALIFORNIA

# RNAV (GPS) RWY 3

APCH CRS	Rwy Idg	11,102
032°	TDZE	10
	Arpt Elev	13

-(USN)

POINT MUGU NAS (NAVAL BASE VENTURA CO) (KNTD)

▼ \* When ALS inop, increase CAT D vis to 7/8 mile.  
 \*\* When ALS inop, increase vis to 1 mile.  
 \*\*\* Circling not authorized E of Rwy 3-21.

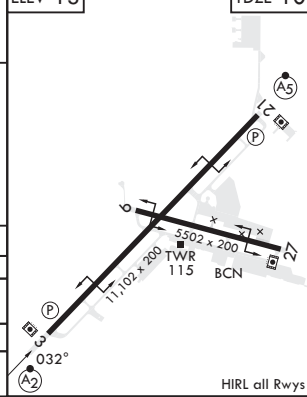
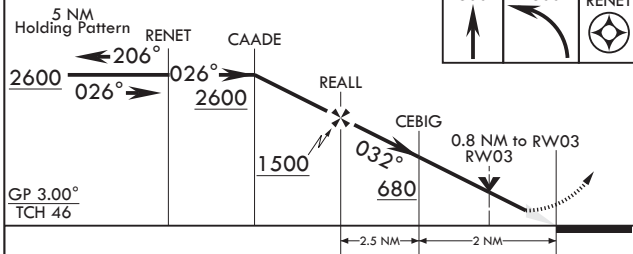


MISSED APPROACH: Climb to 600 then climbing left turn to 2600 direct RENET and hold.

ATIS*	APP CON/DEP CON	TOWER*	GND CON	CLNC DEL	ASR/PAR
125.55 363.05	128.65 307.275	124.85 290.375	121.6 360.2	120.75 279.55	



EMERG SAFE ALT 100 NM 12,100



CATEGORY	A	B	C	D
LNAV/VNAV DA*	261-¾	251	(300-¾)	266-¾ 256 (300-¾)
LNAV MDA**	320-¾	310	(400-¾)	
CIRCLING***	440-1 427 (500-1)	480-1 467 (500-1)	480-1½ 467 (500-1½)	580-2 567 (600-2)

OXNARD, CALIFORNIA  
 Amdt 5 31DEC20

34°07'N - 119°07'W POINT MUGU NAS (NAVAL BASE VENTURA CO) (KNTD)

# RNAV (GPS) RWY 3

SW-3, 26 DEC 2024 to 23 JAN 2025

SW-3, 26 DEC 2024 to 23 JAN 2025