

OXNARD, CALIFORNIA

# TACAN RWY 21

POINT MUGU NAS (NAVAL BASE VENTURA CO) (KNTD)

TACAN NTD Chan 43	APCH CRS 216°	Rwy Idg 11,102 TDZE 13 Arprt Elev 13
----------------------	------------------	--

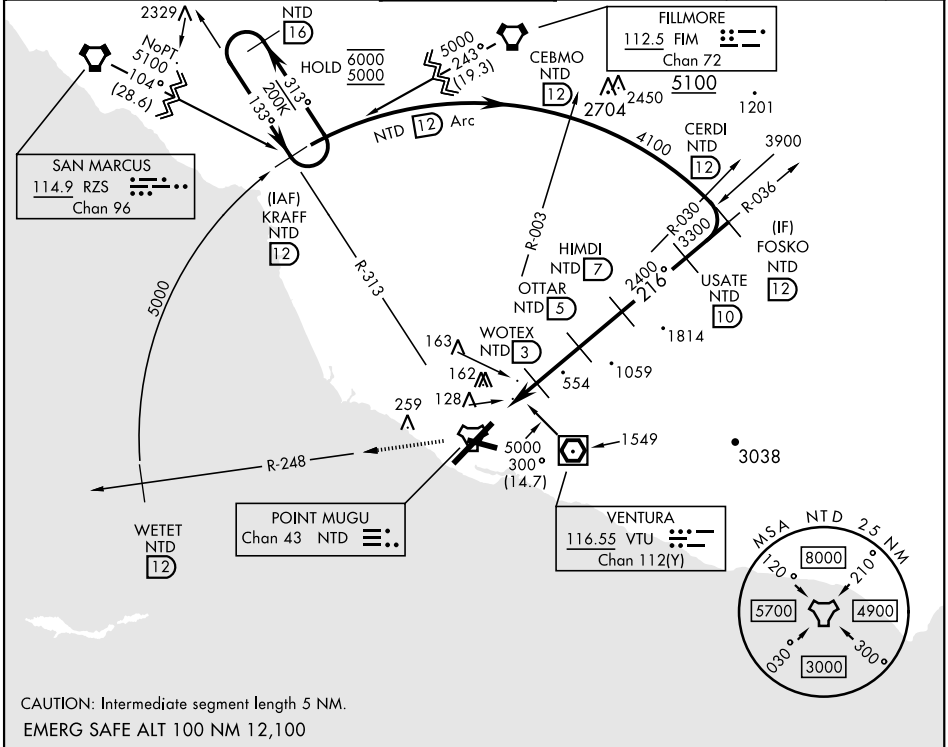
[UN]

▼ \* When ALS inop, increase CAT AB vis to 1 mile, CAT CD vis to 1 3/8 miles.  
 \*\* Circling not authorized E of Rwy 3-21.



MISSED APPROACH: Climb to 5000 via NTD TACAN R-036 to NTD, then via NTD R-248 to WETET. Arc NW on NTD 12 DME arc to KRAFF and hold.

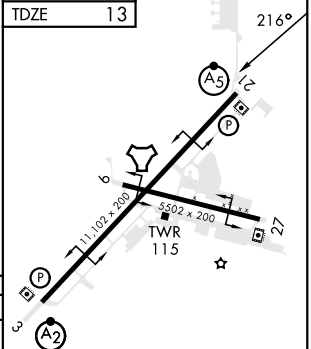
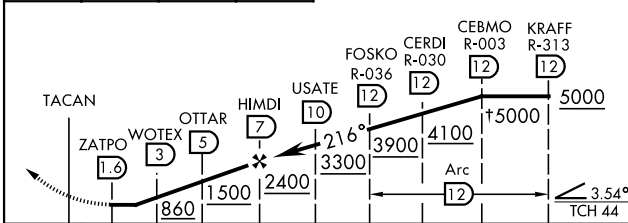
ATIS * 125.55 363.05	APP CON 128.65 307.275	TOWER * 124.85 290.375	GND CON 121.6 360.2	CLNC DEL 120.75 279.55	ASR/ PAR
-------------------------	---------------------------	---------------------------	------------------------	---------------------------	-------------



5000 NTD R-036	NTD	WETET NTD 12	Arc NW to KRAFF
----------------	-----	--------------	-----------------

† Or as assigned.  
 VGSi and descent angles not coincident.

ELEV 13
TDZE 13



CATEGORY	A	B	C	D
S-21 *	460-3/8 447 (500-3/8)		460-7/8 447 (500-7/8)	
CIRCLING **	460-1 447 (500-1)	520-1 507 (600-1)	520-1 1/2 507 (600-1 1/2)	600-2 587 (600-2)

HIRL all rwys

OXNARD, CALIFORNIA  
 Amdt 5 21APR22

34°07'N-119°07'W

POINT MUGU NAS (NAVAL BASE VENTURA CO)

# TACAN RWY 21

SW-3, 26 DEC 2024 to 23 JAN 2025

SW-3, 26 DEC 2024 to 23 JAN 2025