

OXNARD, CALIFORNIA

TACAN Z RWY 3

POINT MUGU NAS
(NAVAL BASE VENTURA CO)(KNTD)

TACAN NTD Chan 43	APCH CRS 026°	Rwy Idg 11,102 TDZE 10 Arprt Elev 13
-----------------------------	-------------------------	---

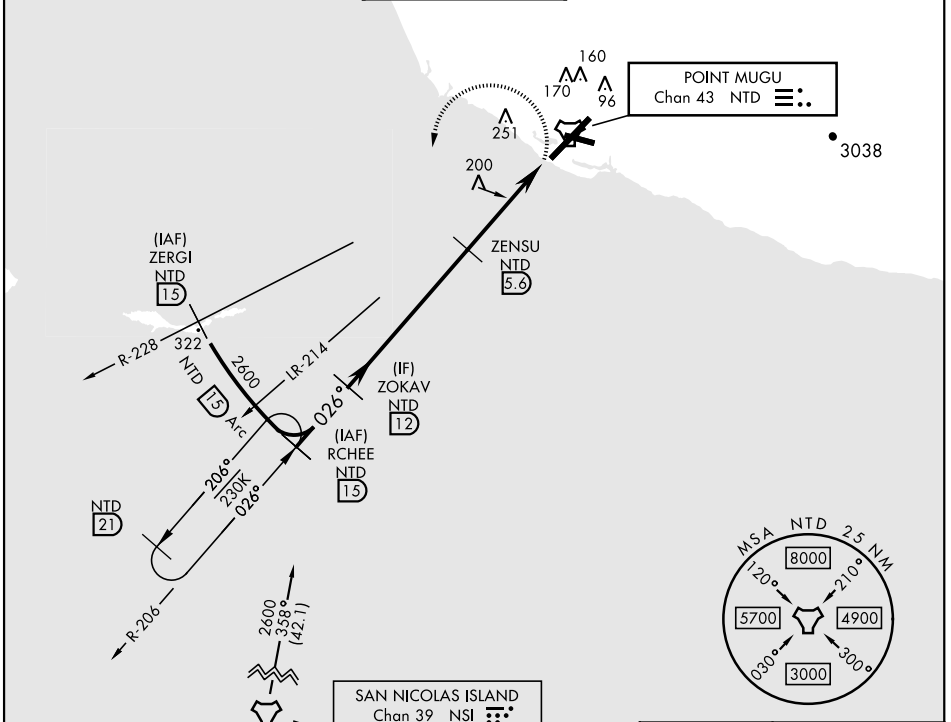
[USN]

▼ *When ALS inop, increase CAT AB vis to 1 mile, CAT CDE vis to 1 3/8 miles.
 **Circling not authorized E of Rwy 3-21.



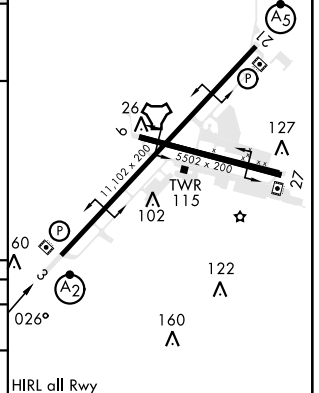
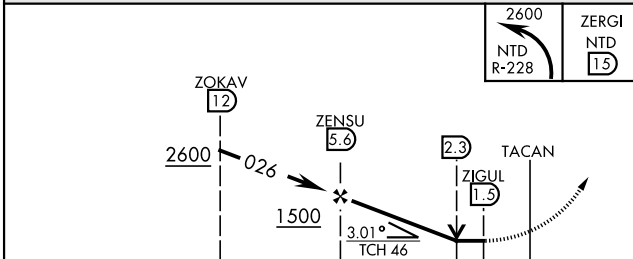
MISSED APPROACH: Climbing left turn to 2600. Intercept the NTD TACAN R-228, then via NTD R-228 to ZERGI, Arc SW of NTD via the 15 DME arc to RCHEE and hold.

ATIS ★ 125.55 363.05	POINT MUGU APP CON 128.65 307.275	POINT MUGU TOWER ★ 124.85 290.375	GND CON 121.6 360.2	CLNC DEL 120.75 279.55	ASR/PAR
--------------------------------	---	---	-------------------------------	----------------------------------	---------



EMERG SAFE ALT 100 NM 12,100

ELEV 13
TDZE 10



CATEGORY	A	B	C	D	E
S-3 *	460-3/4	450 (500-3/4)	460-1	450 (500-1)	
CIRCLING **	460-1 447 (500-1)	480-1 467 (500-1)	480-1 1/2 467 (500-1 1/2)	580-2 567 (600-2)	NA

HIRL all Rwy

OXNARD, CALIFORNIA
Amdt 3 31DEC20

34°07'N-119°07'W

POINT MUGU NAS (KNTD)
(NAVAL BASE VENTURA CO)
TACAN Z RWY 3

SW-3, 26 DEC 2024 to 23 JAN 2025

SW-3, 26 DEC 2024 to 23 JAN 2025