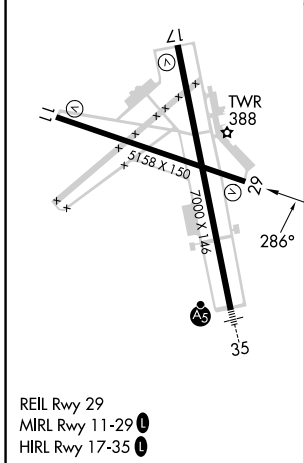
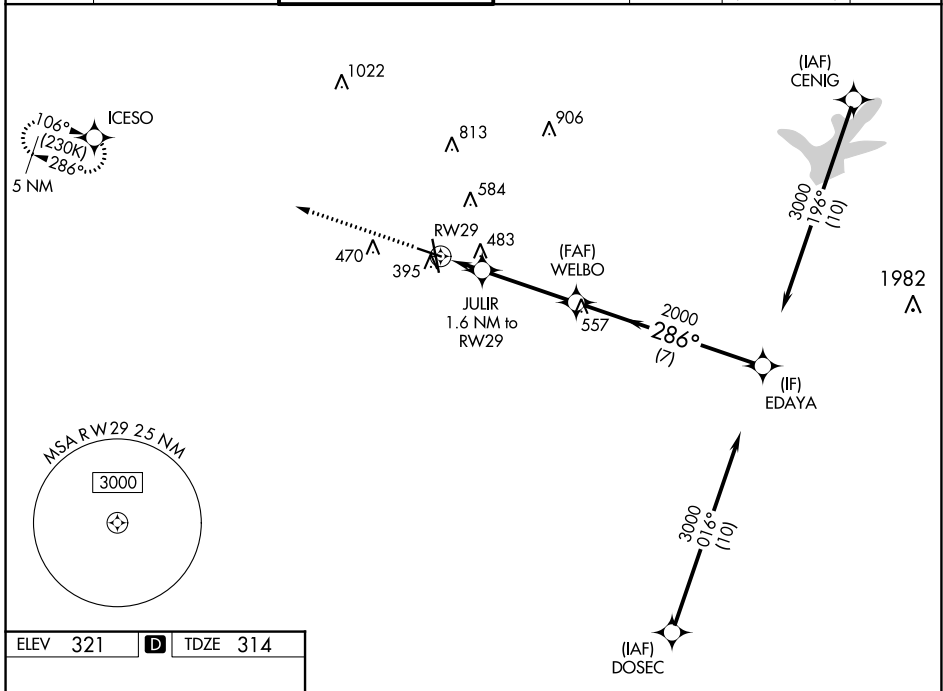


WAAS CH 87022 W29A	APP CRS 286°	Rwy Idg TDZE Apt Elev	5158 314 321
--	------------------------	-----------------------------	---

RNAV (GPS) RWY 29

EASTERWOOD FLD (CLL)

RNP APCH.		MISSED APPROACH: Climb to 2000 direct ICESO and hold.						
Baro-VNAV NA when using Caldwell altimeter setting. For uncompensated Baro-VNAV systems, LNAV/VNAV NA below -3°C or above 54°C. Rwy 29 helicopter visibility reduction below 3/4 SM NA.		ATIS 126.85	HOUSTON APP CON 134.3 360.85	EASTERWOOD TOWER ★ 118.5 (CTAF) 0 284.7	GND CON 128.7 284.7	CLNC DEL 128.7	CLNC DEL 120.4 <small>(when twr closed)</small>	UNICOM 122.95



2000	↑	ICESO	✧			
*LNAV only.						
		RW29	JULIR 1.6 NM to RW29	WELBO 2000	EDAYA 3000	GP 3.00° TCH 54
		860*	2000	286°		
		1.6 NM	3.5 NM	7 NM		
CATEGORY	A	B	C	D	E	
LPV DA	564-3/4		250 (300-3/4)			
LNAV/VNAV DA	762-1 3/8		448 (500-1 3/8)			
LNAV MDA	740-1	426 (500-1)	740-1 1/4		426 (500-1 1/4)	
C CIRCLING	860-1 539 (600-1)	880-1 559 (600-1)	1000-2 679 (700-2)	1180-2 3/4 859 (900-2 3/4)	1180-3 859 (900-3)	

SC-5, 26 DEC 2024 to 23 JAN 2025

SC-5, 26 DEC 2024 to 23 JAN 2025