

VORTAC CLL 113.3 Chan 80	APP CRS 100°	Rwy Idg TDZE Apt Elev	5158 319 321
--	------------------------	-----------------------------	---

VOR or TACAN Rwy 11

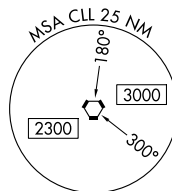
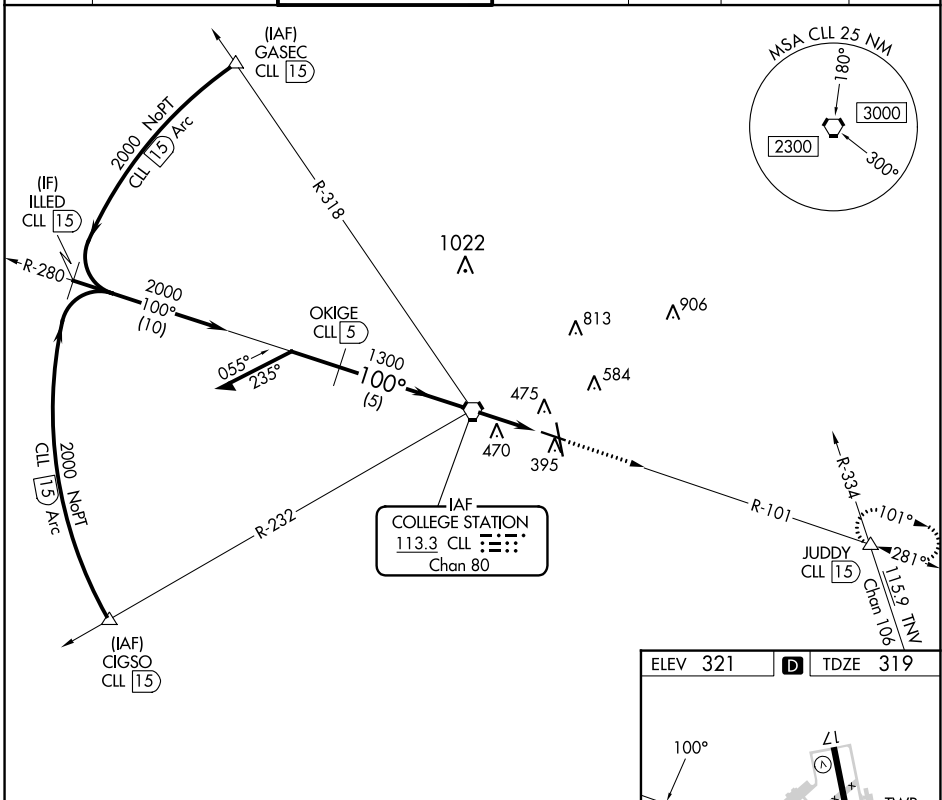
EASTERWOOD FLD (CLL)

DME required for procedure entry.

Procedure turn NA for Cat E.
Rwy 11 helicopter visibility reduction below 3/4 SM NA.

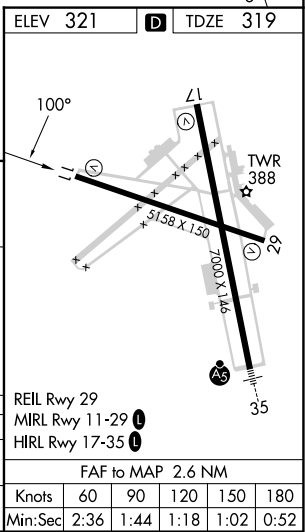
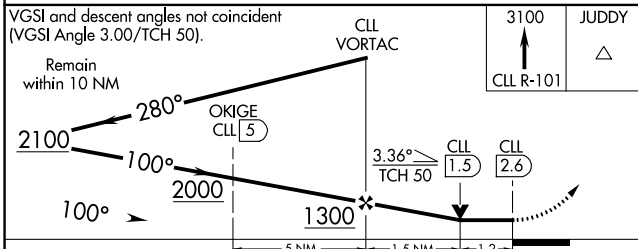
MISSED APPROACH: Climb to 3100 on CLL VORTAC R-101 to JUDDY INT/CLL 15 DME and hold.

ATIS 126.85	HOUSTON APP CON 134.3 360.85	EASTERWOOD TOWER ★ 118.5 (CTAF) 284.7	GND CON 128.7 284.7	CLNC DEL 128.7	CLNC DEL 120.4 (when twr closed)	UNICOM 122.95
-----------------------	--	---	-------------------------------	--------------------------	---	-------------------------



SC-5, 26 DEC 2024 to 23 JAN 2025

SC-5, 26 DEC 2024 to 23 JAN 2025



CATEGORY	A	B	C	D	E
S-11	740-1	421 (500-1)	740-1¼	421 (500-1¼)	
CIRCLING	860-1 539 (600-1)	880-1 559 (600-1)	1000-2 679 (700-2)	1180-2¾ 859 (900-2¾)	1180-3 859 (900-3)

ELEV 321	TDZE 319
FAF to MAP 2.6 NM	
Knots	60 90 120 150 180
Min:Sec	2:36 1:44 1:18 1:02 0:52