

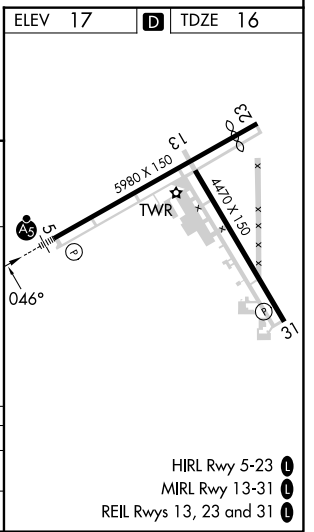
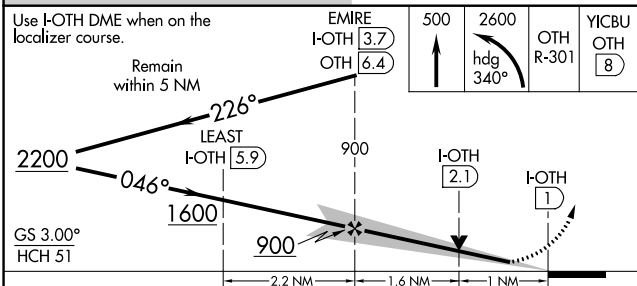
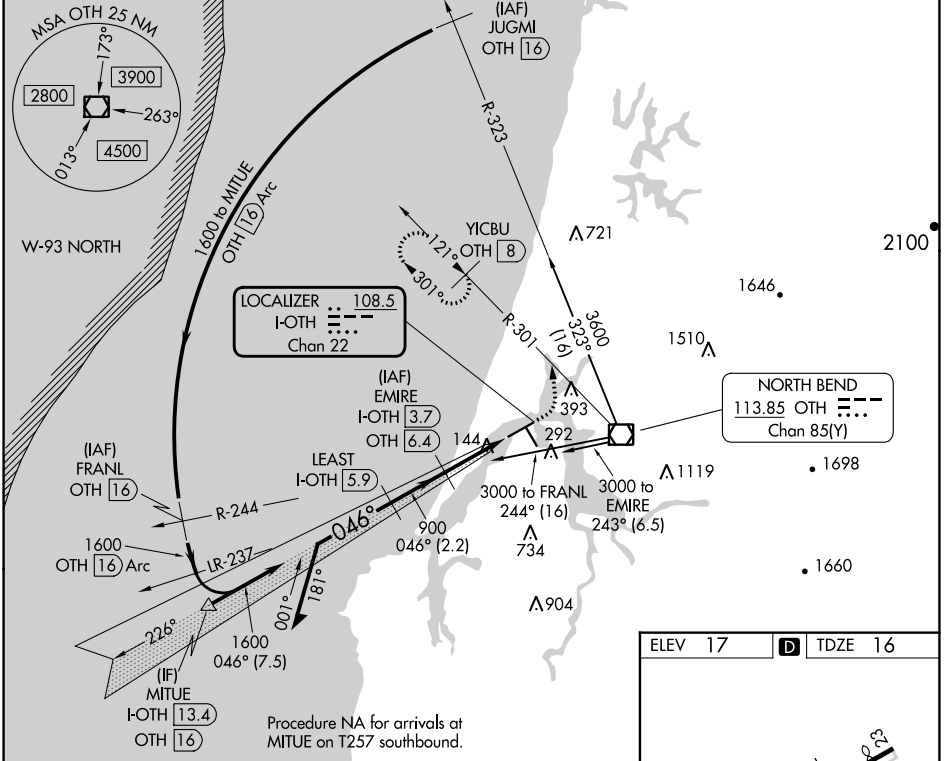
LOC/DME I-OTH 108.5 Chan 22	APP CRS 046°	Rwy Idg TDZE Apt Elev	5320 16 17
--	------------------------	-----------------------------	---------------------------------------

COPTER ILS Y or LOC Y RWY 5

SOUTHWEST OREGON RGNL (OTH)

DME required.		MALSR	MISSED APPROACH: Climb to 500 then climbing left turn to 2600 on heading 340° and OTH VOR/DME R-301 to YICBU/OTH 8 DME and hold, continue climb-in-hold to 2600.
---------------	--	-------	--

AWOS-3PT 135.075	SEATTLE CENTER 127.55 254.35	NORTH BEND TOWER* 118.45 (CTAF) 0	GND CON 127.1
----------------------------	--	---	-------------------------



CATEGORY	COPTER	
H-ILS 5	216-1/2	200 (200-1/2)
H-LOC 5	400-1/2	384 (400-1/2)

NW-1, 26 DEC 2024 to 23 JAN 2025

NW-1, 26 DEC 2024 to 23 JAN 2025