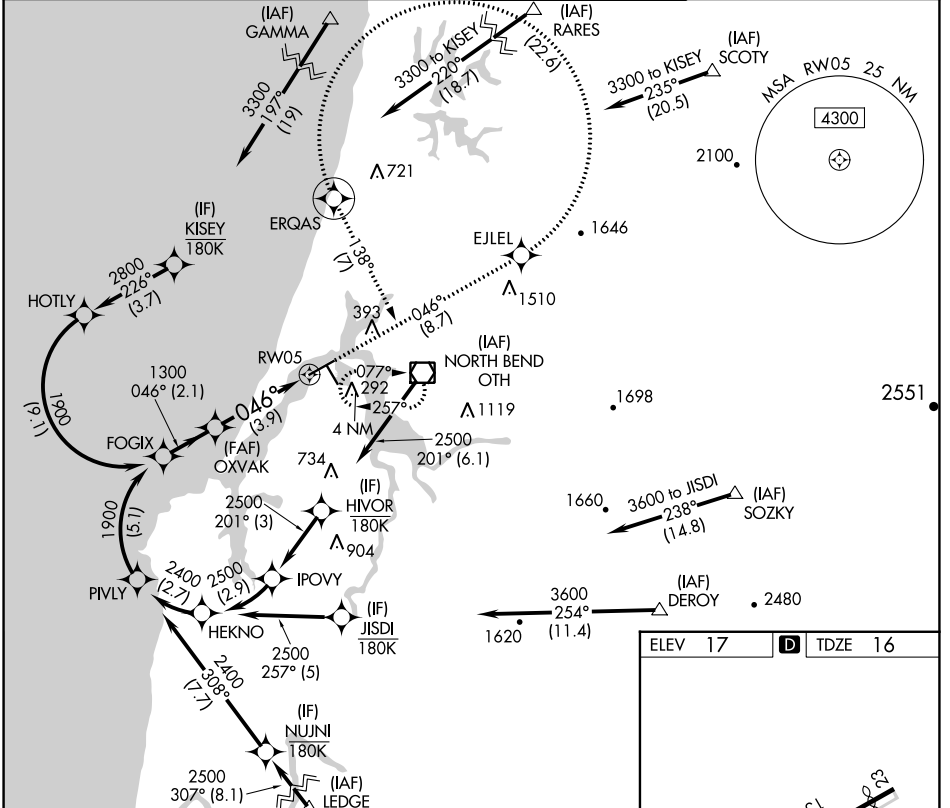


APP CRS	Rwy Idg	5320
046°	TDZE	16
	Apt Elev	17

RNAV (RNP) Z RWY 5

SOUTHWEST OREGON RGNL (OTH)

RNP AR APCH. RF required.		MALS R	MISSED APPROACH: Climb to 3300 on track 046° to EJLEL, left turn to ERQAS, and on track 138° to OTH VOR/DME and hold. *Missed approach requires minimum climb of 400 feet per NM to 1200. #Missed approach requires minimum climb of 255 feet per NM to 2400.
For inop ALS, increase *RNP 0.11 all Cats visibility to 1 SM, #RNP 0.30 all Cats visibility to 1 1/8 SM, and RNP 0.30 all Cats visibility to 1 1/8 SM. For uncompensated Baro-VNAV systems, procedure NA below -2°C or above 54°C.			
AWOS-3PT	SEATTLE CENTER	NORTH BEND TOWER *	GND CON
135.075	127.55 254.35	118.45 (CTAF)	127.1



See planview for multiple IF locations.			
FOGIX	OXVAK	EJLEL	ERQAS
1900	1300	3300	tr 138°
GP 3.00°			OTH
TCH 51			
			RW05
	2.1 NM	3.9 NM	
CATEGORY	A	B	C
RNP 0.11 DA*		394-5/8	378 (400-3/8)
RNP 0.30 DA#		477-1 1/8	461 (500-1 1/8)
RNP 0.30 DA		569-1 3/8	553 (600-1 3/8)
AUTHORIZATION REQUIRED			

ELEV 17	D TDZE 16
---------	------------------

The planview diagram shows the layout of RWY 5 (5980 x 150 ft) and taxiway E1 (4420 x 150 ft). It also indicates the location of the Tower (TWR) and the approach path from the OTH VOR/DME station (046° to RWY 5).

NW-1, 26 DEC 2024 to 23 JAN 2025

NW-1, 26 DEC 2024 to 23 JAN 2025