

APP CRS	Rwy Idg	5998
229°	TDZE	183
	Apt Elev	187

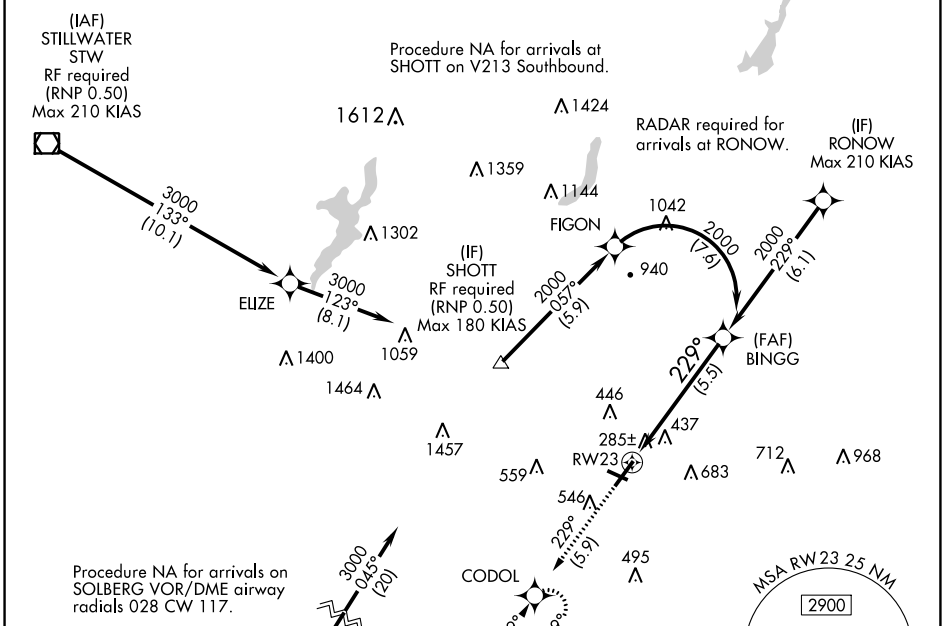
RNAV (RNP) Y RWY 23

MORRISTOWN MUNI (MMU)

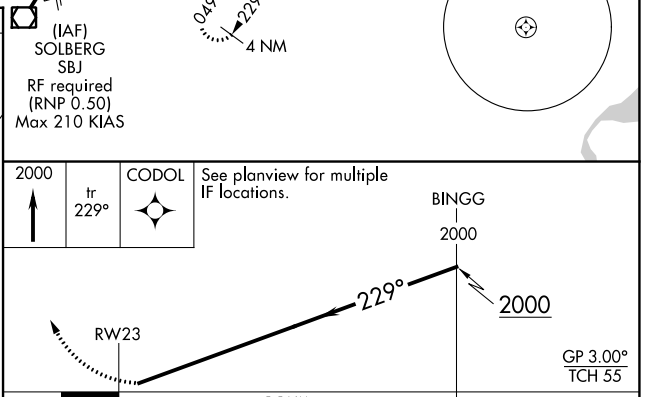
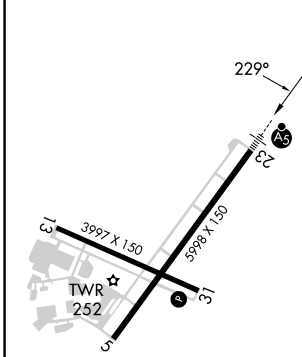
For uncompensated Baro-VNAV systems, procedure NA below -15°C (5°F) or above 48°C (118°F). When local altimeter setting not received, procedure NA. GPS required. For inoperative MALSRL, increase RNP 0.11 all Cats visibility to 1¼ mile and RNP 0.30 all Cats visibility to 2 miles. Visibility reduction by helicopters NA.

MALSRL MISSED APPROACH: Climb to 2000 on track 229° to CODOL and hold.

ATIS 124.25	NEWARK APP CON 127.6 379.9	MORRISTOWN TOWER* 118.1 (CTAF)353.9	GND CON 134.2	CLNC DEL 128.6
-----------------------	--------------------------------------	---	-------------------------	--------------------------



ELEV 187	TDZE 183
----------	----------



CATEGORY	A	B	C	D
RNP 0.11 DA	553-¾ 370 (400-¾)			
RNP 0.30 DA	788-1½ 605 (700-1½)			

AUTHORIZATION REQUIRED

NE-2, 26 DEC 2024 to 23 JAN 2025

NE-2, 26 DEC 2024 to 23 JAN 2025