

HI-TACAN Z RWY 23L/R

TACAN NTU Chan 113	APCH CRS 244°	Rwy ldg 23L 12,001 23R 8000
TDZE 23L 21 23R 20		
Arprt Elev 22		

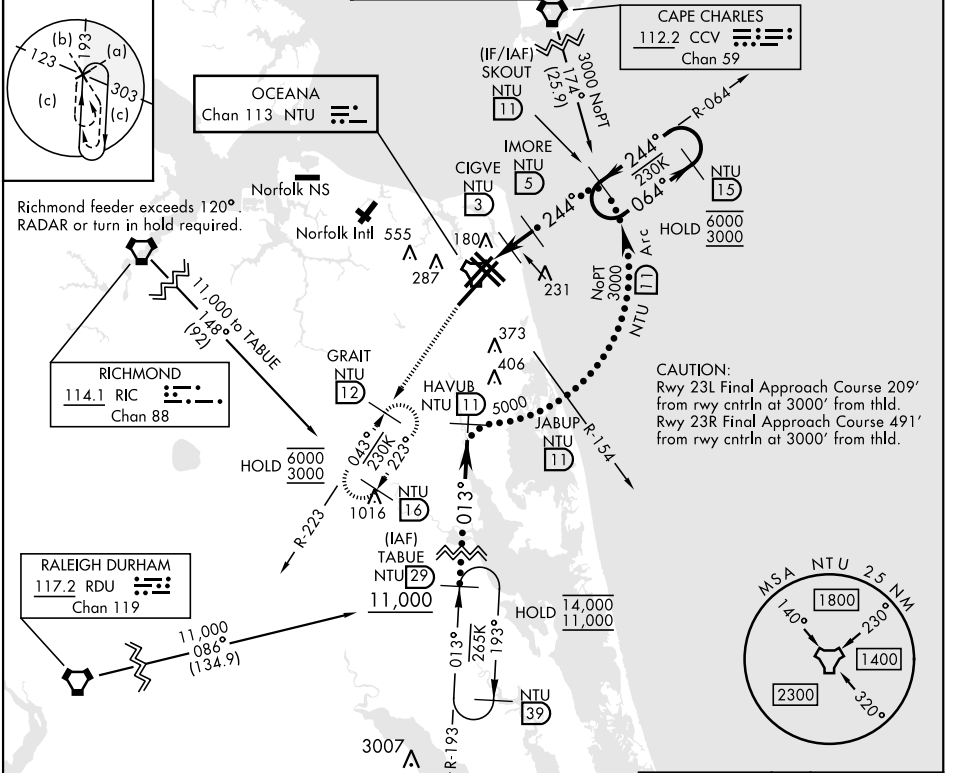
[USN]
 OCEANA NAS (APOLLO SOUCEK FLD) (KNTU)

ALSF-1

* When ALS inop, increase CAT CDE vis to 1 1/2 miles

MISSED APPROACH: Climb to 3000 via R-064 to NTU TACAN, and via R-223 to GRAIT and hold.

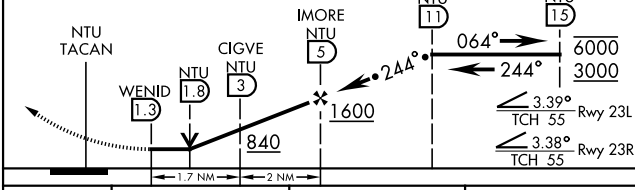
ATIS 317.6	APP/DEP CON 123.9 266.8	TOWER 127.075 360.2	GND CON 119.6 336.4	CLNC DEL 254.4	ASR/PAR
-------------------	--------------------------------	----------------------------	----------------------------	-----------------------	---------



NE-3, 26 DEC 2024 to 23 JAN 2025

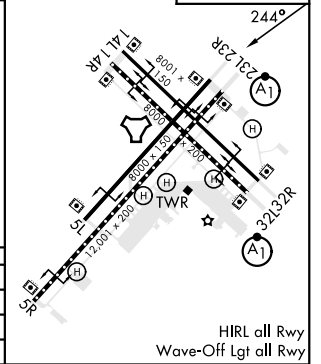
NE-3, 26 DEC 2024 to 23 JAN 2025

EMERG SAFE ALT 100 NM 4100



CATEGORY	C	D	E
S-23L*	440-3/4	419 (500-3/4)	
S-23R	440-1 1/2	420 (500-1 1/2)	
CIRCLING	600-1 1/2 578 (600-1 1/2)	600-2 578 (600-2)	900-3 878 (900-3)

ELEV 22	TDZE 23L 21	TDZE 23R 20
----------------	--------------------	--------------------



VIRGINIA BEACH, VIRGINIA 36° 49' N - 76° 02' W OCEANA NAS (APOLLO SOUCEK FLD) (KNTU)

HI-TACAN Z RWY 23L/R