

HI-TACAN Z RWY 5L

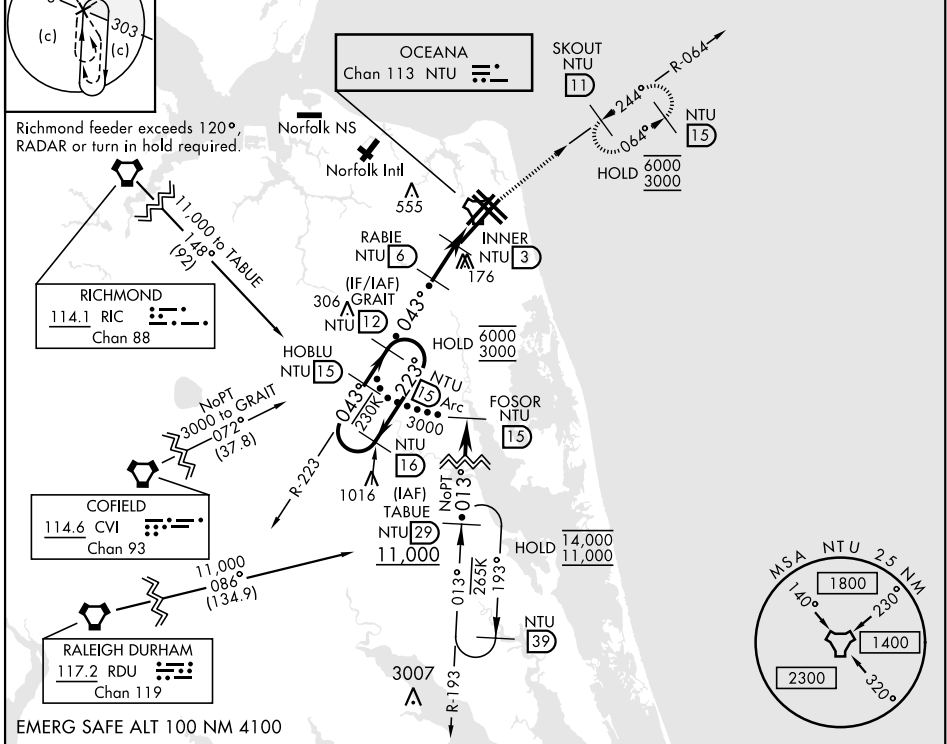
TACAN NTU Chan 113	APCH CRS 043°	Rwy Idg 8000 TDZE 20 Arprt Elev 22	AL-934 [USN]	OCEANA NAS (APOLLO SOUCEK FLD)	(KNTU)
-----------------------	------------------	---	--------------	--------------------------------	--------

MISSED APPROACH: Climb to 3000 via R-223 to NTU TACAN and via R-064 to SKOUT and hold.

ATIS 317.6	APP/DEP CON 123.9 266.8	TOWER 127.075 360.2	GND CON 119.6 336.4	CLNC DEL 254.4	ASR/ PAR
---------------	----------------------------	------------------------	------------------------	-------------------	-------------

	CAUTION: Final approach crs 17° from rwy cntrl at 3000' from thld.						
	Knots	60	120	180	240	300	360
V/V(fpm)	210	420	630	840	1050	1260	

Min climb of 210 ft/NM to 3000 - Controlling Obstacle Unk



	3000 NTU R-223	NTU	NTU R-064	ELEV 22	TDZE 20
	HOBLU 15	GRAIT 12	RABIE 6	INNER 3	TACAN
	16	1600	740	WEVKU 1.3	
	6000 3000	223°	043°	3000	
	2.67° TCH 55				
CATEGORY	C	D	E		
S-5L	420-1½	400 (400-1½)			
CIRCLING	600-1½ 578 (600-1½)	600-2 578 (600-2)	900-3 878 (900-3)		

HIRL all Rwy
Wave-Off Lgt all Rwy

HI-TACAN Z RWY 5L

NE-3, 26 DEC 2024 to 23 JAN 2025

NE-3, 26 DEC 2024 to 23 JAN 2025