

VIRGINIA BEACH, VIRGINIA

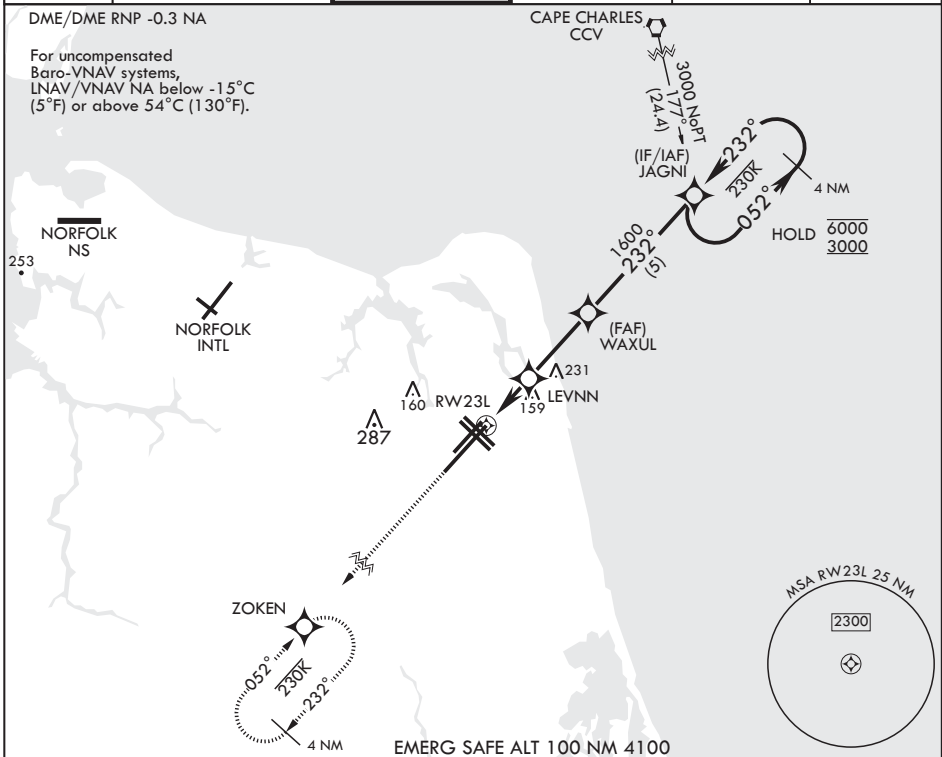
RNAV (GPS) RWY 23L

WAAS CH 67300 W23A	APCH CRS 232°	Rwy ldg TDZE 12,001 21	Arprt Elev 22
--------------------------	------------------	---------------------------	------------------

AL-934 (USN) OCEANA NAS (APOLLO SOUCEK FLD) (KNTU)

⚠ When ALS inop, increase vis to 3/4 mile. ** When ALS inop, increase vis to 7/8 mile. *** When ALS inop, increase CAT AB vis to 1 mile; CAT CD vis to 1 1/8 miles.	ALS F-1	MISSED APPROACH: Climb to 3000 direct ZOKEN and hold.
---	---------	---

ATIS 317.6	APP CON/DEP CON 123.9 266.8	TOWER 127.075 360.2	GND CON 119.6 336.4	CLNC DEL 254.4	ASR/PAR
---------------	--------------------------------	------------------------	------------------------	-------------------	---------



3000 ZOKEN	RNAV TCH not coincident with PAR TCH (50ft)	4 NM Holding Pattern	ELEV 22	TDZE 21
RW23L 1.1 NM to RW23L 2 NM 2.8 NM	LEVNN 700 1600	WAXUL 232° 3000 6000 232° 3000 052° 6000 3000	GP 3.00° TCH 55	RWY 23R 1.1 NM to RW23L 1.4 NM 1.008 NM 1.500 NM 8000 x 1500 12,001 + 200 H TW H BCN 32L 32R 232° 232°
CATEGORY	A	B	C	D
LPV DA*	221-1/2	200	(200-1/2)	
LNAV/VNAV DA**	324-1/2	303	(400-1/2)	
LNAV MDA***	420-1/2	399 (400-1/2)	420-5/8 399 (400-5/8)	
ⓐ CIRCLING	500-1	478 (500-1)	600-1 578 (600-1)	600-2 578 (600-2)
			HIRL all Rwys Wave-Off Lights all Rwys	

VIRGINIA BEACH, VIRGINIA

36°49'N - 76°02'W OCEANA NAS (APOLLO SOUCEK FLD) (KNTU)

Amdt 4 27 JAN 22

RNAV (GPS) RWY 23L

NE-3, 26 DEC 2024 to 23 JAN 2025

NE-3, 26 DEC 2024 to 23 JAN 2025