

# TACAN Y RWY 5L

TACAN NTU Chan 113	APCH CRS 043°	Rwy Idg 8000
		TDZE 20
		Arprt Elev 22

AL-934 [USN]

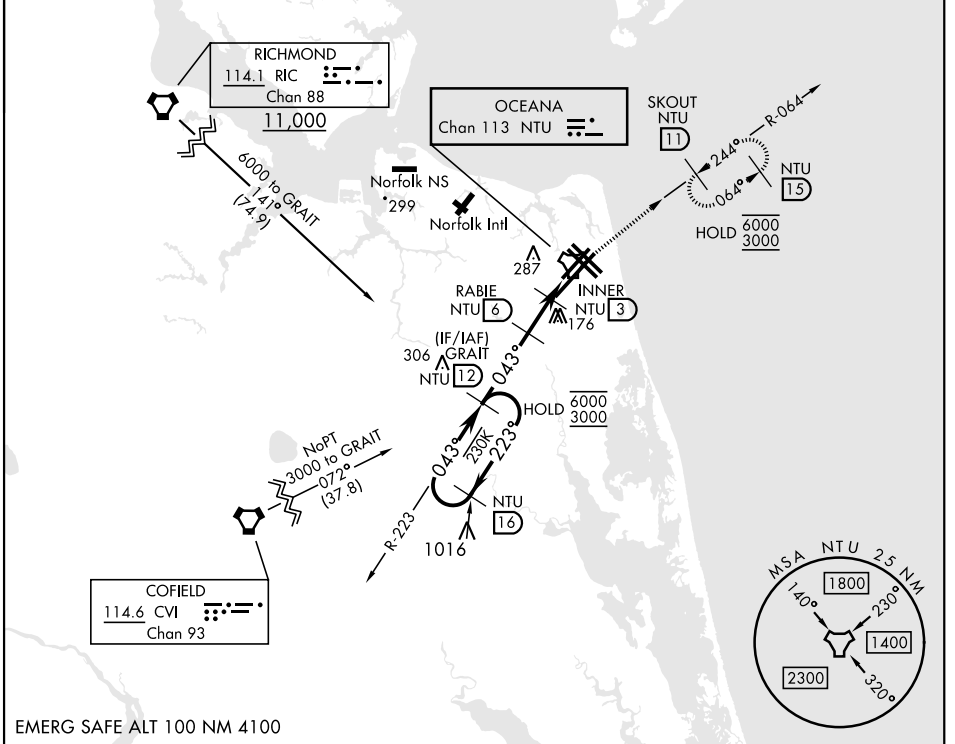
OCEANA NAS (APOLLO SOUCEK FLD) (KNTU)

**MISSED APPROACH:** Climb to 3000 via R-223 to NTU TACAN and via R-064 to SKOUT and hold.

ATIS 317.6	APP/DEP CON 123.9 266.8	TOWER 127.075 360.2	GND CON 119.6 336.4	CLNC DEL 254.4	ASR/ PAR
---------------	----------------------------	------------------------	------------------------	-------------------	-------------

CAUTION: Final approach crs 17° from rwy cntrln at 3000' from thld.	Knots	60	120	180	240	300	360
	V/V(fpm)	210	420	630	840	1050	1260

Min climb of 210 ft/NM to 3000 - Controlling Obstacle Unk



EMERG SAFE ALT 100 NM 4100

	3000	NTU R-223	NTU	NTU R-064	ELEV 22	TDZE 20
	6000	GRAIT	16	12		
	3000	2.67° TCH 55	16	12		
		223°	043°	043°		
		1600	740	TACAN		
		3 NM	1.7	0.7		
CATEGORY	A	B	C	D		
S-5L	420-1	400 (400-1)	420-1 1/8	400 (400-1 1/8)		
CIRCLING	500-1	478 (500-1)	600-1 1/2	578 (600-1 1/2)	600-2	578 (600-2)

# TACAN Y RWY 5L

NE-3, 26 DEC 2024 to 23 JAN 2025

NE-3, 26 DEC 2024 to 23 JAN 2025

HIRL all rwy's  
Wave-Off Lgt all rwy's