

TACAN Y RWY 5R

TACAN NTU Chan 113	APCH CRS 043°	Rwy Idg 12,001 TDZE 19 Arprt Elev 22
-----------------------	------------------	---

[USN]

OCEANA NAS (APOLLO SOUCEK FLD) (KNTU)

▼ * When ALS inop, increase CAT AB vis to 1 mile, CAT CD vis to 1½ miles.

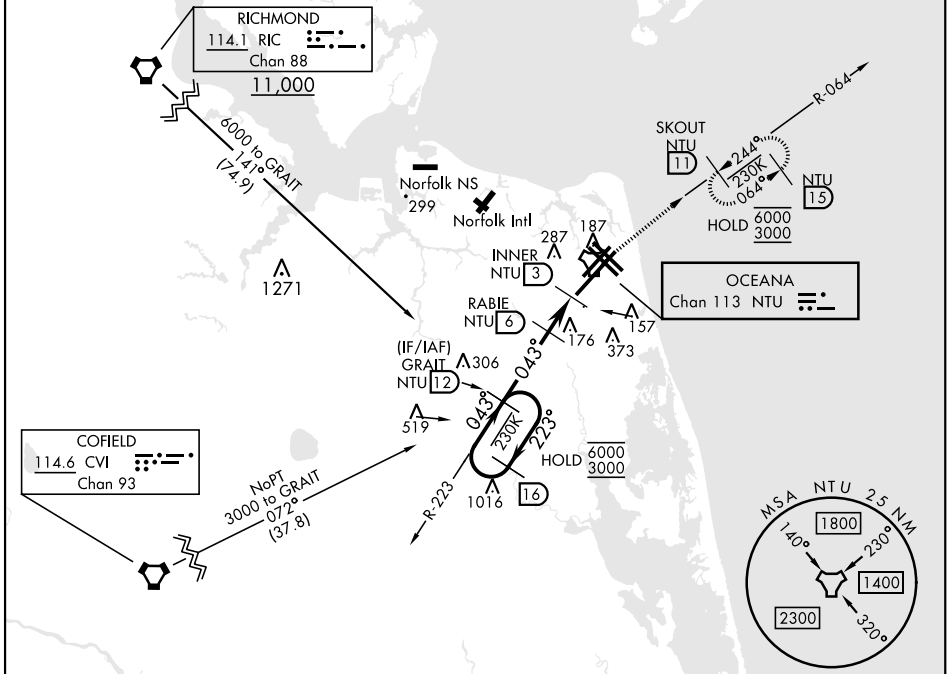


MISSED APPROACH: Climb to 3000 via R-223 to NTU TACAN and via R-064 to SKOUT and hold.

ATIS 317.6	APP/DEP CON 123.9 266.8	TOWER 127.075 360.2	GND CON 119.6 336.4	CLNC DEL 254.4	ASR/ PAR
---------------	----------------------------	------------------------	------------------------	-------------------	-------------

CAUTION: Final approach course 72° from rwy ctrln at 3000' from thld.

Knots	60	120	180	240	300	360
V/V(fpm)	210	420	630	840	1050	1260
Min climb of 210 ft/NM to 3000 - Controlling Obstacle Unk						



NE-3, 26 DEC 2024 to 23 JAN 2025

NE-3, 26 DEC 2024 to 23 JAN 2025

ELEV 22		TDZE 19	
EMERG SAFE ALT 100 NM 4100			
CATEGORY	A	B	D
S-5R *	420-½	401 (400-½)	420-¾ 401 (400-¾)
CIRCLING	500-1	478 (500-1)	600-2 578 (600-½) 578 (600-2)

TACAN Y RWY 5R

HIRL all rwy's
Wave-Off Lgt all rwy's