

VOR/DME	ATR	APP CRS	Rwy Ldg	5331
112.6		234°	TDZE	51
Chan	73		Apt Elev	53

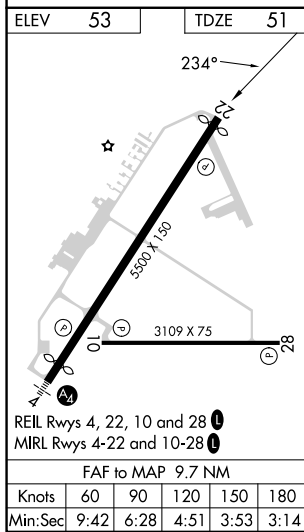
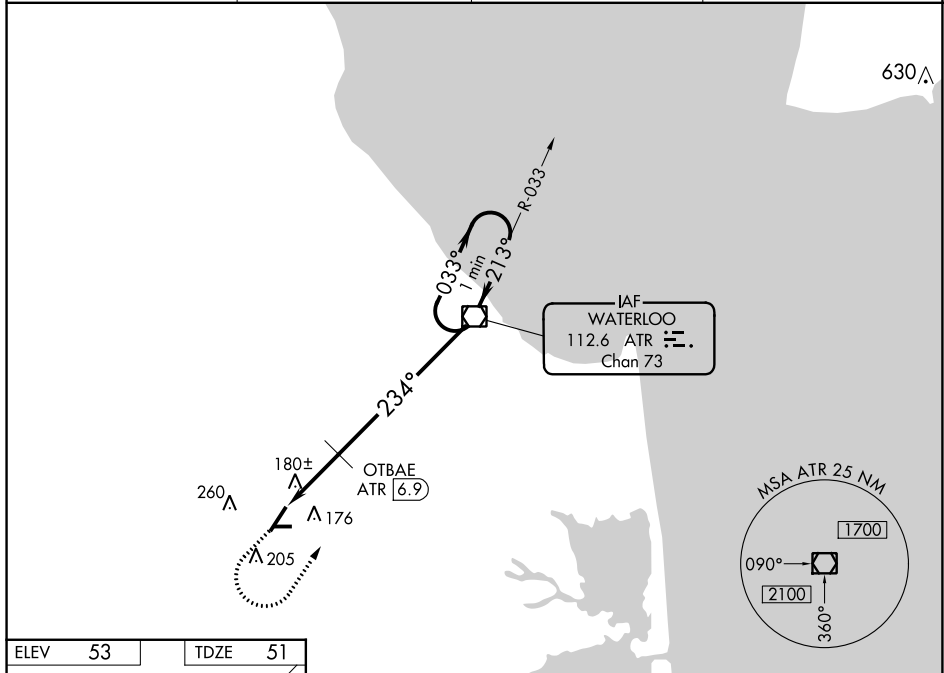
VOR RWY 22

DELAWARE COASTAL (GED)

⚠ Rwy 22 helicopter visibility reduction below 1 SM NA.
⚠ Rwy 22 Straight-In and Circling minimums NA at night.

MISSED APPROACH: Climb to 800 then climbing left turn to 3000 direct ATR VOR/DME and hold.

ASOS	DOVER APP CON	GCO	UNICOM
118.375	132.425 257.875	125.55	123.0 (CTAF) 0



800 3000 ATR VGSI and descent angles not coincident (VGSI Angle 3.00/TCH 45). One Minute Holding Pattern

ATR VOR/DME

OTBAE ATR 6.9

ATR 9.7

234°

033°

213°

3000

680

2.83° TCH 52

2.8 NM 6.9 NM

CATEGORY	A	B	C	D
S-22	680-1	629 (700-1)	680-1¾	629 (700-1¾)
C CIRCLING	680-1	627 (700-1)	720-1¾ 667 (700-1¾)	720-2 667 (700-2)
OTBAE FIX MINIMUMS				
S-22	440-1	389 (400-1)	440-1⅛	389 (400-1⅛)
C CIRCLING	560-1 507 (600-1)	580-1 527 (600-1)	720-1¾ 667 (700-1¾)	720-2 667 (700-2)

NE-3, 26 DEC 2024 to 23 JAN 2025

NE-3, 26 DEC 2024 to 23 JAN 2025