

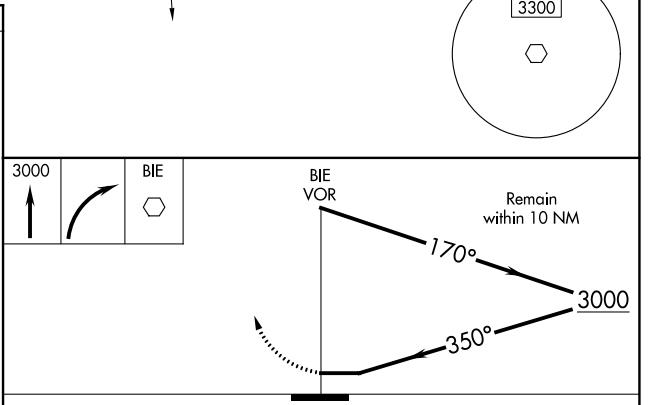
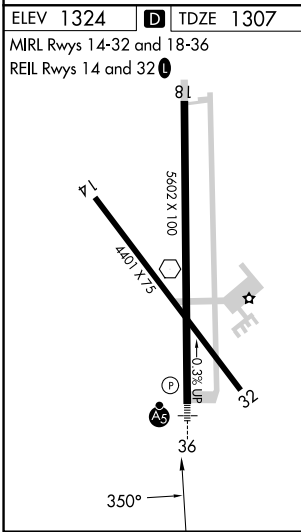
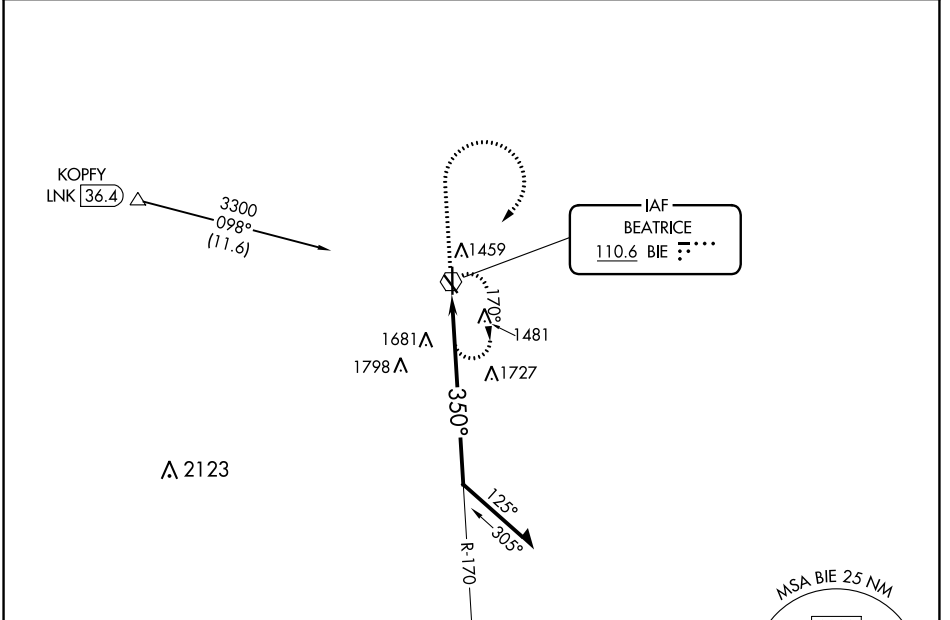
VOR BIE <b>110.6</b>	APP CRS <b>350°</b>	Rwy Idg TDZE Apt Elev	<b>5602</b> <b>1307</b> <b>1324</b>
-------------------------	------------------------	-----------------------------	---

# VOR RWY 36

BEATRICE MUNI (BIE)

DME required for procedure entry.		MALSR 	MISSED APPROACH: Climb to 3000 then right turn direct BIE VOR and hold.
	For inop ALS, increase S-36 Cats A/B visibility to 1 SM and Cats C/D visibility to 2 SM.		

AWOS-3 <b>125.325</b>	MINNEAPOLIS CENTER <b>126.4 317.7</b>	UNICOM <b>122.8 (CTAF)</b>
--------------------------	--	-------------------------------



CATEGORY	A	B	C	D
S-36	2040-3/4	733 (800-3/4)	2040-1 5/8	733 (800-1 5/8)
<input checked="" type="checkbox"/> CIRCLING	2040-1	716 (800-1)	2040-2 716 (800-2)	2100-2 1/2 776 (800-2 1/2)

NC-2, 26 DEC 2024 to 23 JAN 2025

NC-2, 26 DEC 2024 to 23 JAN 2025