


| | | |
|---|------------------------|---|
| LOC/DME I-EAU 109.5 Chan 32 | APP CRS 224° | Rwy Idg 7301 TDZE 913 Apt Elev 913 |
|---|------------------------|---|

ILS or LOC RWY 22

CHIPPEWA VALLEY RGNL (EAU)

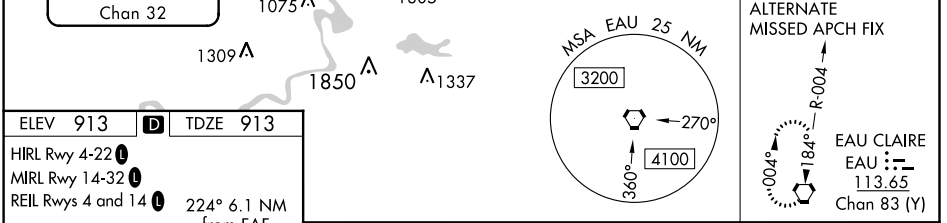
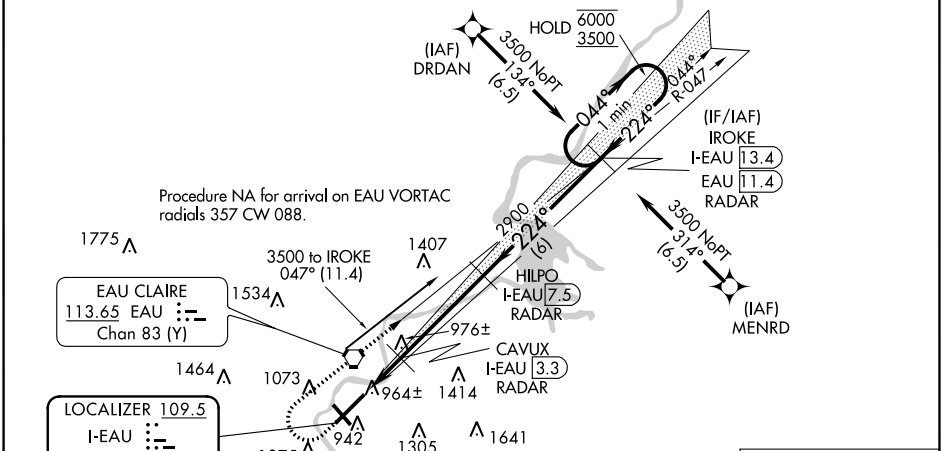
From DRDAN and MENRD RNAV-1 GPS required.
DME or RADAR required.




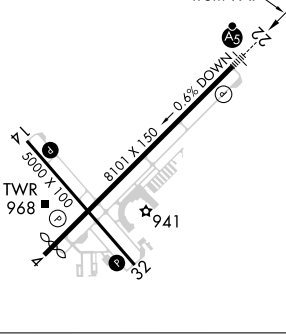
⚠ For inop ALS increase S-LOC 22 Cat C and D visibility to 7/8 SM. For inop ALS when using Rice Lake altimeter setting, increase S-ILS 22 all Cats visibility to 1 SM. When local altimeter setting not received, use Rice Lake altimeter setting and increase DA 110 feet and all MDA 120 feet, increase S-LOC 22 Cat C and D and Circling Cat C visibility 1/4 SM. VDP NA when using Rice Lake altimeter setting.

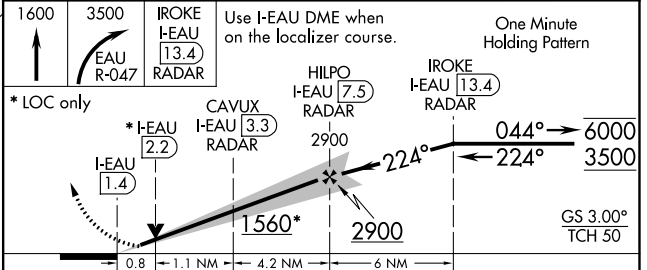
MALSR 

MISSED APPROACH: Climb to 1600 then climbing right turn to 3500 on EAU VORTAC R-047 to IROKE/I-EAU LOC/DME 13.4 DME/RADAR and hold.

| | | | | |
|------------------------|--|---|---------------------------|-------------------------|
| ATIS 126.025 | MINNEAPOLIS CENTER 125.3 335.6 | EAU CLAIRE TOWER ★ 118.575 (CTAF) 0 | GND CON 120.925 | UNICOM 122.95 |
|------------------------|--|---|---------------------------|-------------------------|



| | | | | | |
|---|----------|----------|------|------|------|
| ELEV 913 | D | TDZE 913 | | | |
| HIRL Rwy 4-22  | | | | | |
| MIRL Rwy 14-32  | | | | | |
| REIL Rwy 4 and 14  | | | | | |
| 224° 6.1 NM from FAF | | | | | |
|  | | | | | |
| FAF to MAP 6.1 NM | | | | | |
| Knots | 60 | 90 | 120 | 150 | 180 |
| Min:Sec | 6:06 | 4:04 | 3:03 | 2:26 | 2:02 |



| CATEGORY | A | B | C | D |
|-------------------|-----------------------|-----------------------|---------------------------|-------------------------|
| S-ILS 22 | 1113-1/2 | 200 (200-1/2) | | |
| S-LOC 22 | 1220-1/2 | 307 (400-1/2) | | |
| C CIRCLING | 1480-1 567 (600-1) | 1540-1 627 (700-1) | 1660-2/4 747 (800-2/4) | 2200-3 1287 (1300-3) |

EC-3, 26 DEC 2024 to 23 JAN 2025

EC-3, 26 DEC 2024 to 23 JAN 2025