

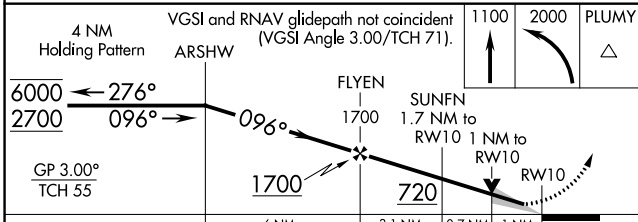
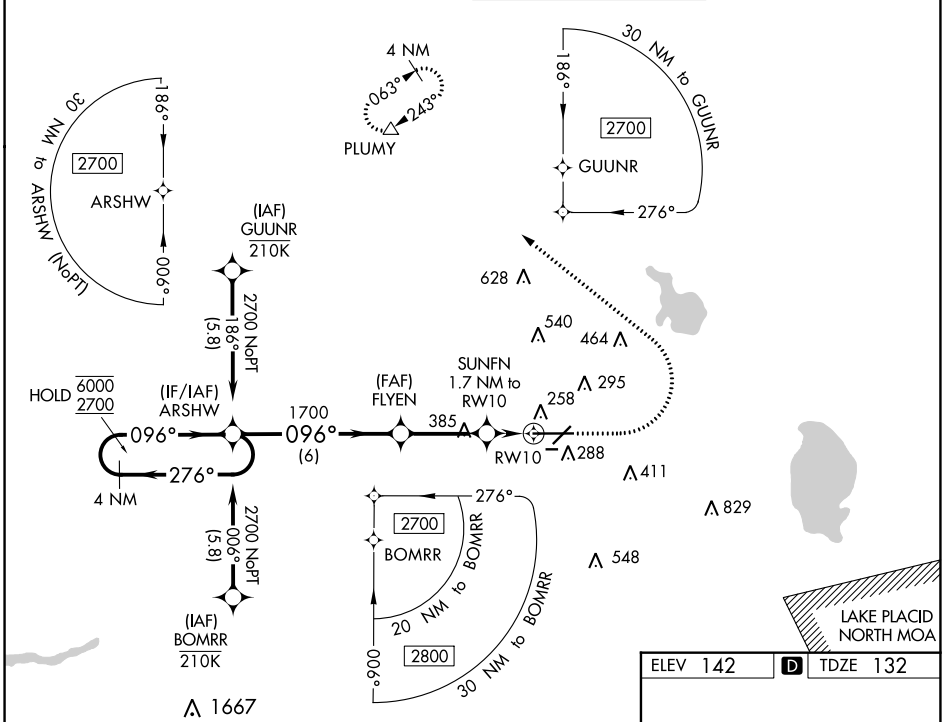
WAAS CH 78305 W10A	APP CRS 096°	Rwy Idg 8500 TDZE 132 Apt Elev 142
--	------------------------	---

RNAV (GPS) RWY 10

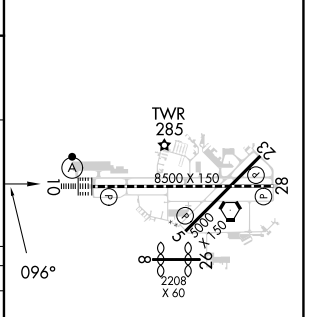
LAKELAND LINDER INTL (LAL)

RNP APCH-GPS	ALSF-2	MISSED APPROACH: Climb to 1100 then climbing left turn to 2000 direct PLUMY and hold.
<p>⚠ Circling NA to Rws 8 and 26. For uncompensated Baro-VNAV systems, LNAV/VNAV NA below -15°C or above 54°C. For inop ALS, increase LNAV/VNAV all Cats visibility to RVR 4500.</p>		

ATIS 118.025	TAMPA APP CON 120.65 290.3	LAKELAND TOWER 124.5 236.775	GND CON 121.4
------------------------	--------------------------------------	--	-------------------------



ELEV 142	TDZE 132
----------	----------



CATEGORY	A	B	C	D
LPV DA		332/18	200 (200-½)	
LNAV/VNAV DA		439/24	307 (300-½)	
LNAV MDA	520/24	388 (400-½)	520/35	388 (400-¾)
CIRCLING	600-1	660-1	720-1½	840-2¼
	458 (500-1)	518 (600-1)	578 (600-1½)	698 (700-2¼)

TDZ/CL Rwy 10	HIRL Rws 5-23 and 10-28
---------------	-------------------------

SE-3, 26 DEC 2024 to 23 JAN 2025

SE-3, 26 DEC 2024 to 23 JAN 2025