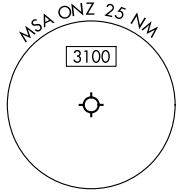


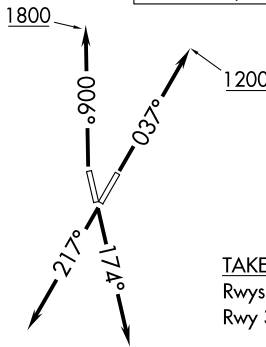
**TOP ALTITUDE:  
ASSIGNED BY ATC**



RNAV 1 - DME/DME/IRU or GPS.

RADAR required.

DETROIT DEP CON  
134.3 284.0  
AWOS-3  
119.675  
CTAF  
123.0



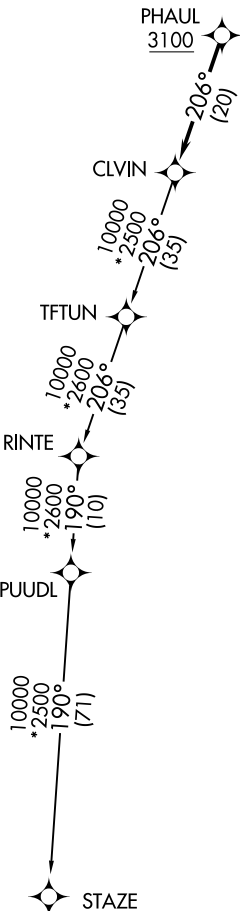
**TAKEOFF MINIMUMS:**

Rwys 4, 17, 22: Standard.

Rwy 35: Standard with minimum climb of 500' per NM to 1100.

NOTE: Turbojet departures at/above 10000, maintain 280K until advised by ATC.

NOTE: Chart not to scale.



**DEPARTURE ROUTE DESCRIPTION**

**TAKEOFF RUNWAY 4:** Climb on heading 037° to 1200 then as assigned by ATC, thence....

**TAKEOFF RUNWAY 17:** Climb on heading 174° or as assigned by ATC, thence....

**TAKEOFF RUNWAY 22:** Climb on heading 217° or as assigned by ATC, thence....

**TAKEOFF RUNWAY 35:** Climb on heading 006° to 1800 then as assigned by ATC, thence....

....for RADAR vectors to cross PHAUL at or above 3100, then on track 206° to CLVIN, then on (transition). Maintain ATC assigned altitude, expect filed altitude 10 minutes after departure.

**STAZE TRANSITION (CLVIN3.STAZE):**