

DETROIT DEP CON
134.3 284.0
AWOS-3
119.675
CTAF
123.0

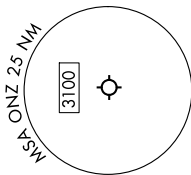
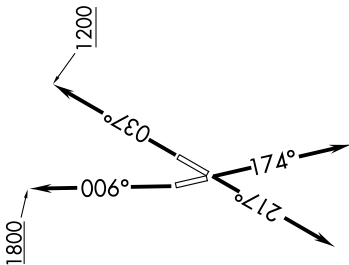
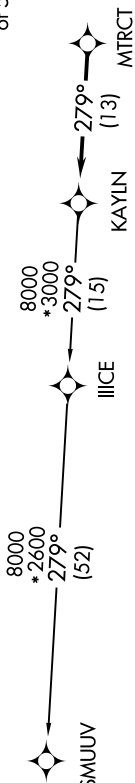
TAKEOFF MINIMUMS:

Rwy 4, 17, 22: Standard.

Rwy 35: Standard with minimum climb
of 500' per NM to 1100.

**TOP ALTITUDE:
ASSIGNED AT ATC**

RNAV-1 DME/IRU or GPS.
RADAR required.



NOTE: Turbojet departures at/above 10000,
maintain 280K until advised by ATC.

NOTE: Chart not to scale.

DEPARTURE ROUTE DESCRIPTION

- TAKEOFF RUNWAY 4:** Climb on heading 037° to 1200 then as assigned by ATC, thence....
- TAKEOFF RUNWAY 17:** Climb on heading 174° or as assigned by ATC, thence....
- TAKEOFF RUNWAY 22:** Climb on heading 217° or as assigned by ATC, thence....
- TAKEOFF RUNWAY 35:** Climb on heading 006° to 1800 then as assigned by ATC, thence....

....for RADAR vectors to MTRCT, then on track 279° to KAYLN, then on (transition). Maintain ATC assigned altitude,
expect filed altitude 10 minutes after departure.

SMUUV TRANSITION (KAYLN3.SMUUV):