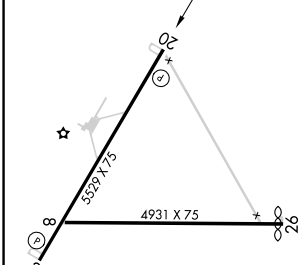
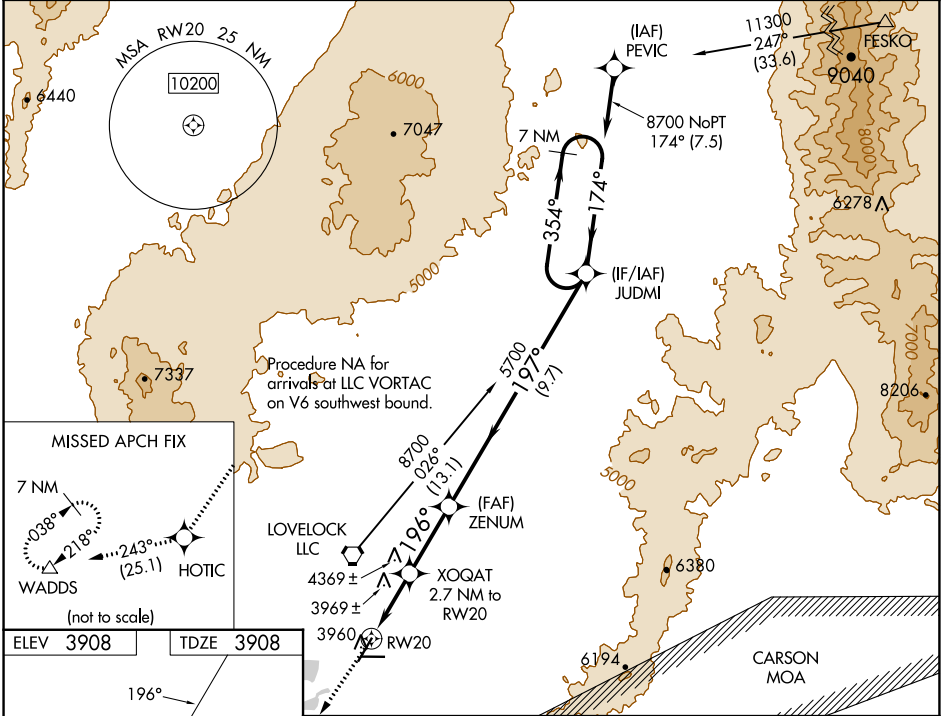


WAAS CH <b>78240</b> <b>W20A</b>	APP CRS <b>196°</b>	Rwy ldg <b>5529</b> TDZE <b>3908</b> Apt Elev <b>3908</b>
--	------------------------	---

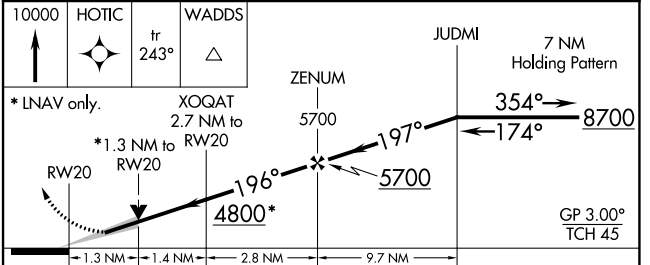
# RNAV (GPS) RWY 20

DERBY FLD (LOL)

<p>For uncompensated Baro-VNAV systems, LNAV/VNAV NA below -19°C (-2°F) or above 52°C (127°F). Circling NA northwest of Rwy 2-20. DME/DME RNP-0.3 NA.</p>	<p>MISSED APPROACH: Climb to 10000 direct HOTIC and on track 243° to WADDS and hold.</p>	
	<p>ASOS <b>120.675</b></p>	<p>OAKLAND CENTER <b>128.8 285.5</b></p>



ELEV 3908	TDZE 3908
<p>REIL Rwy 2 and 20 </p> <p>MIRL Rwy 2-20 </p>	



CATEGORY	A	B	C	D
LPV DA	4158-1		250 (300-1)	
LNAV/VNAV DA	4249-1½		341 (400-1½)	
LNAV MDA	4360-1	452 (500-1)	4360-1¾	452 (500-1¾)
CIRCLING	4360-1	452 (500-1)	4540-1¾ 632 (700-1¾)	4680-2½ 772 (800-2½)

SW-4, 26 DEC 2024 to 23 JAN 2025

SW-4, 26 DEC 2024 to 23 JAN 2025