

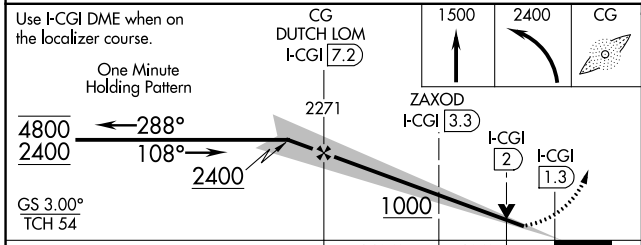
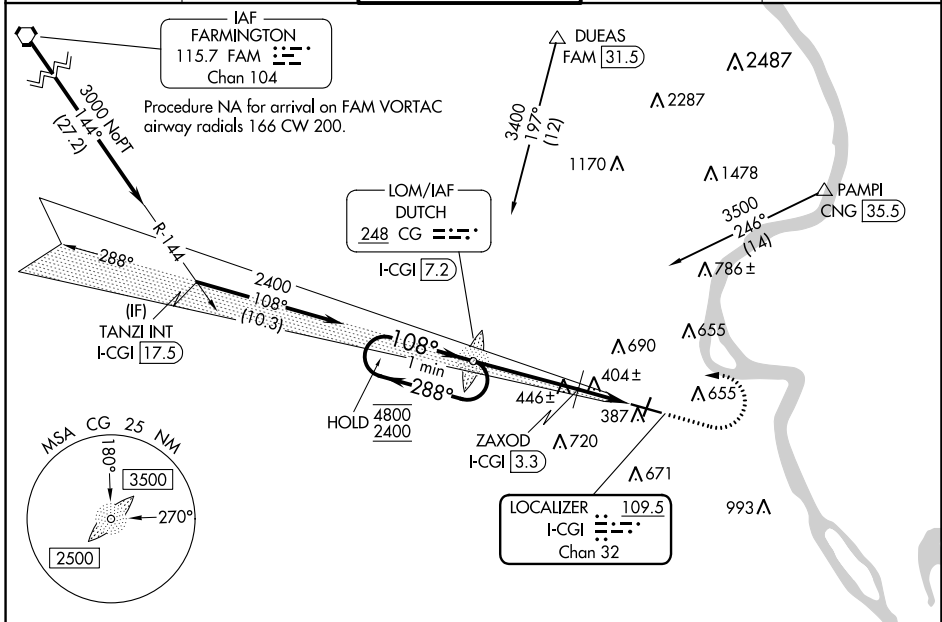
LOC/DME I-CGI	APP CRS	Rwy Idg	6500
109.5	108°	TDZE	337
Chan 32		Apt Elev	342

# ILS or LOC RWY 10

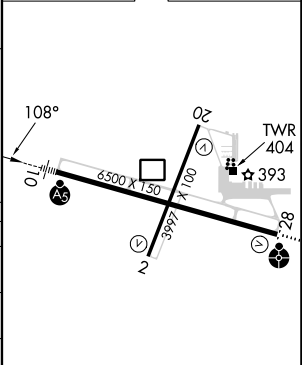
CAPE GIRARDEAU RGNL (CGI)

ADF required.	MALSR	MISSED APPROACH: Climb to 1500 then climbing left turn to 2400 direct DUTCH LOM/I-CGI 7.2 DME and hold.
For inop ALS, increase S-LOC 10 Cat C/D visibility to 1 1/2 SM.		

ASOS 120.55	MEMPHIS CENTER 133.65 292.15	CAPE GIRARDEAU TOWER ★ 125.525 (CTAF)	GND CON 124.7	UNICOM 122.95
----------------	---------------------------------	--	------------------	------------------



ELEV 342		TDZE 337
----------	--	----------



CATEGORY	A	B	C	D
S-ILS 10		537-1/2	200 (200-1/2)	
S-LOC 10	1000-1/2	663 (700-1/2)	1000-1 1/2	663 (700-1 1/2)
CIRCLING	1000-1	658 (700-1)	1000-1 7/8 658 (700-1 7/8)	1080-2 1/4 738 (800-2 1/4)
ZAXOD FIX MINIMUMS				
S-LOC 10		660-1/2	323 (400-1/2)	
CIRCLING	880-1 538 (600-1)	960-1 618 (700-1)	1000-1 3/4 658 (700-1 3/4)	1080-2 1/4 738 (800-2 1/4)

MIRL Rwy 2-20	
HIRL Rwy 10-28	
FAF to MAP 5.9 NM	
Knots	60 90 120 150 180
Min:Sec	5:54 3:56 2:57 2:22 1:58

NC-3, 26 DEC 2024 to 23 JAN 2025

NC-3, 26 DEC 2024 to 23 JAN 2025