

WAAS CH 48942 W36A	APP CRS 008°	Rwy Idg TDZE Apt Elev	6003 869 873
--	------------------------	-----------------------------	---

RNAV (GPS) RWY 36

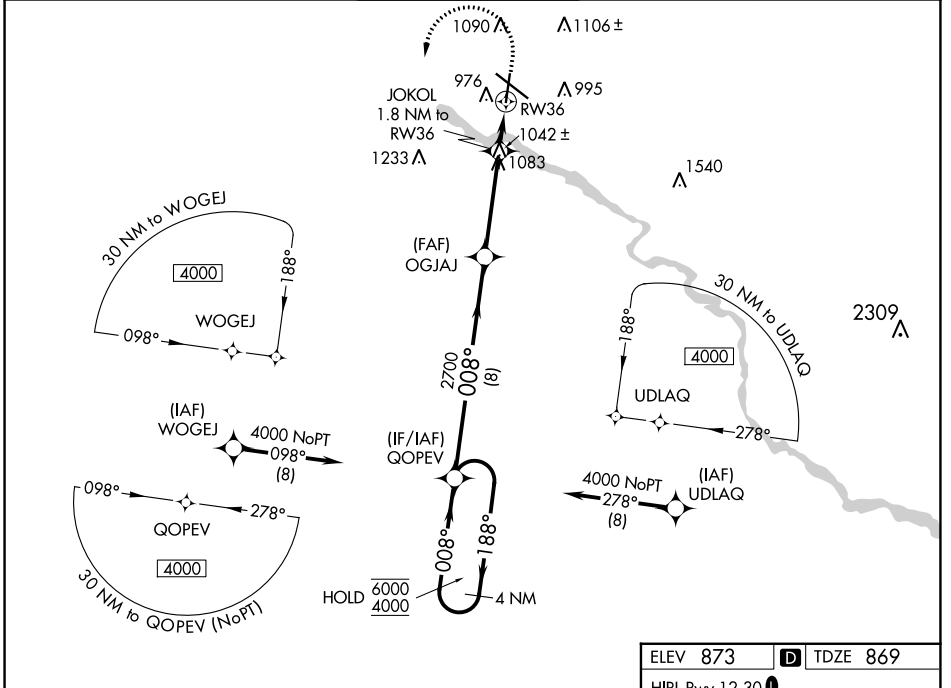
WATERLOO RGNL (A.I.O)

RNP APCH-GPS.

▼ For uncompensated Baro-VNAV systems, LNAV/VNAV NA below -20°C or above 54°C.

▲ MISSED APPROACH: Climb to 2000 then climbing left turn to 4000 direct QOPEV and hold.

ATIS 120.65	WATERLOO APP CON * 118.9 251.15	WATERLOO TOWER * 125.075 (CTAF) 0 257.8	GND CON 121.9 269.1	UNICOM 122.95
-----------------------	---	---	-------------------------------	-------------------------



NC-3, 26 DEC 2024 to 23 JAN 2025

NC-3, 26 DEC 2024 to 23 JAN 2025

VGSI and RNAV glidepath not coincident. (VGSI Angle 3.00/TCH 40).

4 NM Holding Pattern	QOPEV	OGJAJ	JOKOL	RW36
6000 ← 188°	4000 → 008°	2700	1.8 NM to RW36	
GP 3.00°			* 1.2 NM to RW36	
TCH 40				
	8 NM	3.8 NM	0.6 NM	1.2 NM

CATEGORY	A	B	C	D
LPV DA	1069-3/4		200 (200-3/4)	
LNAV/VNAV DA	1190-1		321 (400-1)	
LNAV MDA	1300-1	431 (500-1)	1300-1 1/4	431 (500-1 1/4)
C CIRCLING	1360-1 487 (500-1)	1400-1 527 (600-1)	1480-1 3/4 607 (700-1 3/4)	1600-2 1/4 727 (800-2 1/4)

